

()

(*Cuminum cyminum* L.)

*

(// : // :)

) ()
(

(Amirnpoor & Moosavi, 1995)

()

(Tavoosi, 2000)

(Omidbaigi, 2007)

(2002) Farahza Kazemi et al.

$\frac{1}{3}$ FC $\frac{2}{3}$ FC FC

FC

(Farzaneh,

.1990)

(2004) Balandari

(*Cuminum cyminum*)

(2004) Bagheri & Mazaheri Laghob

.(Kafi, 2002)

.(Kafi, 2002)

.(Kafi, 2002; Tatari, 2004)

.(Kafi, 2002)

(2000) Tavoosi

Li & Jiang .

(2004)

Jirovets & Buchbouer

(2005)

(2005) Iacobellis et al. .

(2004) Tatari

(Kafi,

2002; Li & Jiang, 2004; Mazandarani et al., 2004;

.Yan et al., 2002)

... :
] [(I)
 [(F) (F)

/ / /)
 ()

/ ms/cm EC

) (

(GC/mass)

Mstat-C

-	/	pH
ms/cm	/	EC
meq/litr	/	Ca + Mg
meq/litr	/	Na
meq/litr	/	HCO3
meq/litr	/	Cl
meq/litr	/	SO4
meq/litr	/	
meq/litr	/	
-	/	SAR
%	/	ESP
%	/	
%	/	
%	/	
%	/	N
ppm	/	P
ppm	/	K
%	/	

()

:]
 (I)

: (I)

()

()

(P<0.05)

(P<0.05)

(1995) Aminpoor & Moosavi

I I

(2004) Tatari

ns	ns	ns	**	**	/ **	/ ns	/ ns	/ ns
/ ns	ns	*	**	*	/ **	/ ns	/ **	/ ns
/ ns	ns	**	**	**	/ **	/ ns	/ ns	/ ns
/ ns	ns	/ ns	/ ns	ns	/ ns	/ ns	/ ns	/ ns
/					/	/	/	/
(%)								
ns % * % **								

a	a	b	b	b	/ a	/ a	/ a	/ b	F_1
a	a	a	a	a	/ a	/ a	/ a	/ a	F_2
/			/	/	/	/	/	/	LSD
a	a	b	b	b	/ a	/ a	/ a	/ b	I_1
a	a	a	a	a	/ a	/ b	/ a	/ a	I_2
a	a	a	a	a	/ a	/ b	/ a	/ a	I_3
/	/	/			/	/	/	/	LSD
a	b	c	c	c	b	/ a	/ a	/ c	I_1F_1
a	ab	bc	bc	bc	/ ab	/ ab	/ a	/ bc	I_1F_2
a	ab	abc	bc	abc	/ ab	/ bc	/ a	/ bc	I_2F_1
a	a	a	a	a	/ a	/ c	/ a	/ a	I_2F_2
a	ab	bc	bc	bc	/ ab	/ bc	a	/ bc	I_3F_1
a	a	ab	ab	ab	/ ab	/ bc	/ a	/ ab	I_3F_2
/	/		/	/	/	/	/	/	LSD

: F_2 : F_1

: I_3 : I_2 : I_1

:

I F

I F I F

(P<0.05)

I F I F

(Aminpoor & Moosavi, 1995; Kafi,

.2002; Tatari, 2004)

(2004) Saboor-Bilandi .

()

(Kafi, 2002)

I F

I F

.(Kafi, 2002; Tatari, 2004)

(P<0.05)

(Omidbaigi,

.2007)

(Aminpoor &

.Moosavi, 1995; Kafi, 2002; Tatari, 2004)

(Balandari, 2004;

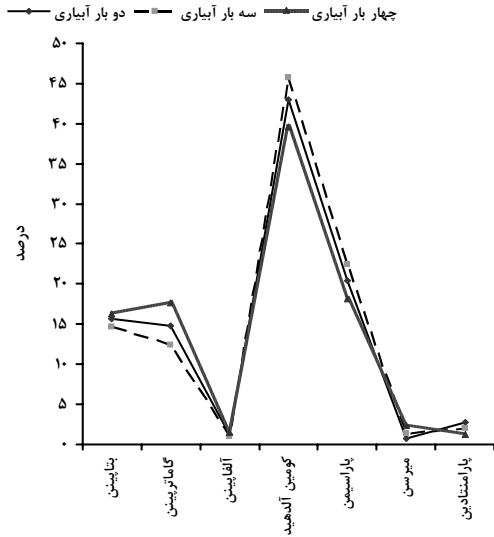
.Mazandarani et al., 2004)

)

(P<0.05)

(

(Balandari, 2004; Mazandarani et al., 2004)



I F I F I F

(P<0.05)

I F

I F

(P<0.05)

I F

(P<0.05)

(P<0.05)

(P<0.05)

()

(P<0.05)

/	ns	/	ns	/	ns	/	ns	/	ns	/	ns	/	ns
/	**	/	**	/	**	/	**	/	**	/	**	/	**
/	**	/	ns	/	**	/	*	/	**	/	**	/	**
/	*	/	**	/	ns	/	ns	/	ns	/	**	/	ns
/	/	/	/	/	/	/	/	/	/	/	/	/	/
/	/	/	/	/	/	/	/	/	/	/	/	/	(%)
	ns	%		*	%		**						

:

REFERENCES

1. Aminpoor, R. & Moosavi, S. F. (1995). The effect of irrigation times on cumin yield and its components. *Agricultural Science and Natural Resources*, 1, 1-7. (In Farsi).
2. Bagheri, A. & Mazaheri Laghab, H. (2004). The effect of cumin leaf spraying by Zn and Mn micro nutrient on its yield and essential oil percentage. In: Proceedings of *Cuminum cyminum*. 2 Dec. Azad University of Sabzevar. P: 44-47.
3. Balandari, A. (2004). Study of seed germination, growth and essential oil in cumin cultivars. In: Proceedings of *Cuminum cyminum*. 2 Dec. Azad University of Sabzevar. P: 48-52.
4. Farahza Kazemi, S., Farahi Ashnaini, S. & Sharifi, A. (2002). The effect of water stress on seed yield components of *Cuminum cyminum*. *Research and production J*, 54,42-45.
5. Farzaneh, H. (1990). *Agrochemistry*. Avaye Noor Press. P: 148.
6. Iacobellis, N. S., Takayanagi, T. & Kitajmi, J. (2005). Antibacterial activity of *Cuminum cyminum* L. and *Carum carvi* L. essential oils. *J Agric Food Chem*, 53(1), 57-61.
7. Jirovets, L. & Buchbouer, G. (2005). Composition, quality control and antimicrobial activity of the essential oil of Cumin (*Cuminum cyminum* L.) from Bulgaria that had been saved for up to 36 years. In: *J Food Sci Techn*, 40.
8. Kafi, M. (2002). *Cumin, production and processing*. Ferdowsi University of Mashhad. PP: 195.
9. Li, R. & Jiang, Z. T. (2004). Chemical composition of the essential oil of *Cuminum cyminum* L. from china. *Tianjin*, 19(4), 311-313.
10. Mazandarani, M., Ghaemi, A., Ghanbarzadeh, S., Kiaii, A. & Kiaii, R. (2004). Identify of important and effective elements of essence and determining of antibacterial of cumin in Golestan province. In: Proceedings of 2nd medicinal plant symposium. Tehran Shahed University. P: 273.
11. Omidbaigi, R. (2007). *Production and processing of medicinal plants*. Behnashr pub. 340pp.
12. Saboor-Bilandi, M. (2004). The effect of different levels of manure on cumin yield in Gonabad region. In: Proceedings of *Cuminum cyminum*. 2 Dec 2004. Azad University of Sabzevar. P: 88-89.
13. Tatari, M. (2004). *The effect of different salt levels and irrigation times on growth and yield of cumin in Mashhad region*. MsC thesis in Agronomy. Ferdowsi University of Mashhad. PP: 131.
14. Tavoosi, M. (2000). *Effect of different irrigation regimes on cumin yield components*. MsC thesis in irrigation. Ferdowsi University of Mashhad. PP: 95.
15. Tazari, A. M. & Fahimi, H. (2004). Salt stress effect essential oils components of cumin in tissue culture and whole plant. In: Proceedings of *Cuminum cyminum*. 2 Dec. Azad University on Sabzevar. P: 79-81.
16. Yan, J. H., Tang, K. W., Zhong, M. & Deng, N. H. (2002). Determination of chemical components of volatile oil from *Cuminum cyminum* L. by gas chromatography-mass spectrometry. *Se Pu*, 20(6), 569-72.