

( )

***Trichogramma brassicae* Bez. (Hym.; Trichogrammatidae)**  
***Anagasta kuehniella* Zell.**  
***Plodia interpunctella* Hub.**

\*

( // : // : )

***Trichogramma brassicae***

***Plodia interpunctella***

***Anagasta kuehniella***

±

± )

( :

(**T<sub>h</sub>**)

(**b**)

***T. brassicae***

/ /

(**T<sub>h</sub>**)

(**b**)

/ /

:

( ) .( )

)

.( )

( )

( )

(

$$\frac{N_e}{N_0} = \frac{\exp(P_0 + P_1 N_0 + P_2 N_0^2 + P_3 N_0^3 + \dots + P_z N_0^z)}{1 + \exp(P_0 + P_1 N_0 + P_2 N_0^2 + P_3 N_0^3 + \dots + P_z N_0^z)}$$
 (b) (T<sub>h</sub>)

SAS CATMOD

*Trichogramma brassicae* Bez.

II III

T. brassicae

2. Logistic Regression
3. Linear
4. Quadratic
5. Cubic

(.)

b  
( )

( )

( )

*T. brassicae*

/

$(\frac{T}{T_h})$

/

/

*T.brassicae*

| <i>Plodia interpunctella</i> | <i>Anagasta kuehniella</i> |
|------------------------------|----------------------------|
| / ± /                        | / ± /                      |
| / ± /                        | / ± /                      |
| / ± /                        | / ± /                      |
| ± / *                        | ± / *                      |

(N<sub>0</sub>)  
(N<sub>0</sub><sup>2</sup>)  
(N<sub>0</sub><sup>3</sup>)

*T.brassicae*

| (r <sup>2</sup> ) | (T/T <sub>h</sub> ) | (T <sub>h</sub> ) | (b)   |
|-------------------|---------------------|-------------------|-------|
| /                 | /                   | / ± /             | / ± / |
| /                 | /                   | / ± /             | / ± / |

*A. kuehniella*  
*P. interpunctella*

N<sub>0</sub>

Ne

III

( )

:

a

$$a = \frac{bN_t}{1 + cN_t}$$

(

( )

$$N_e = \frac{bTP_t N_t^2}{1 + cN_t + bT_h N_t^2}$$

(

-

a

c

b

t

P<sub>t</sub>

Ne

T<sub>h</sub>

T t

N

Excel

*T. brassicae*

-

-

( )

*T. brassicae* (T<sub>h</sub>)

/

/

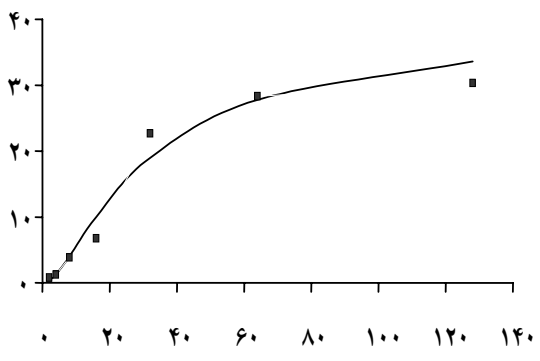
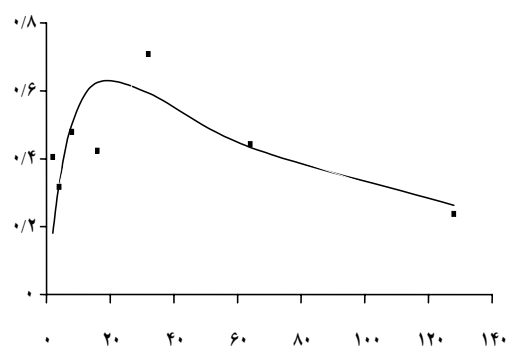
$(\frac{T}{T_h})$

T. ( )  
 ± brassicae  
 ±

( )  
 T. brassicae  
 / /  
 ( )  
 / /

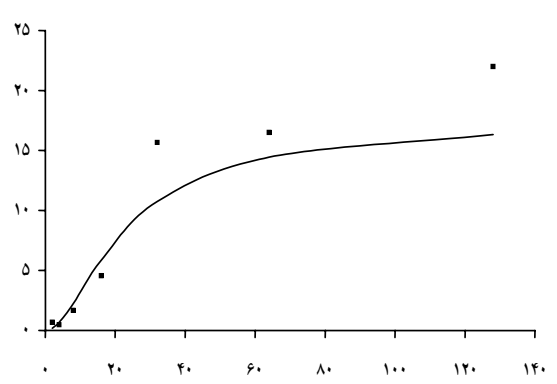
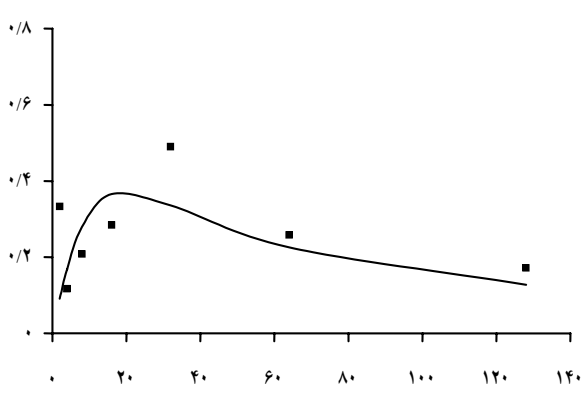
T. brassicae /

( )



( )

T.brassicae (■)



( )

T.brassicae (■)

( )  
*T. brassicae* ( ) *T. pretiosum* Riley  
± *Phthorimaea operculella* Zeller  
± ( )  
*T. ostrinae* Page & Chen  
*Ostrinia nubilalis* Hubner.  
*T.*  
*ostrinae*  
( )  
±  
:  
±  
*Sitotroga* *T. brassicae*  
( ) *cerealella*  
( ) ( )  
( )  
*Bracon hebetor* Say.

**REFERENCES**

1. Arbab Tafti, R., Sahragard, A., Salehi, L. & Asgari, Sh. 2004. Study on functional response of *Trichogramma brassicae* Bezdenko (Hym.; Trichogrammatidae) to different densities of *Sitotroga cerealella* Olivier (Lep.; Gelechiidae) eggs. J. Agric. Sci, 1(1): 1-8.
2. Fathipour, Y., Kamali, K., Khalghani, J. & Abdollahi, Gh. 2001. Functional response of *Trissolcus grandis* (Hym.; Scelionidae) to different egg densities of *Eurygaster integriceps* (Het.; Scutelleridae) and effects of different wheat genotype on it. Appl. Entomol. Phyt. 68(1&2): 123-136.
3. Hassell, M. P. 1978. The Dynamics of Arthropod Predator-Prey System. Princeton University, Princeton, New Jersey.
4. Holling, C. S. 1959. Some characteristics of simple types of predation and parasitism. Can. Entomol, Vol. 91: 385-398.
5. Holling, C. S. 1966. The functional response of invertebrate predators to prey density. Mem. Ent. Soc. Can, Vol. 48: 1-86.
6. Juliano, S. A. 1982. Influence of host age on host acceptability and suitability for species of *Trichogramma* (Hym.; Trichogrammatidae) attacking aquatic Diptera. Can. Entomol, Vol. 114: 713-720.

7. Juliano, S. A. 1993. Non linear curve fitting :Predation and functional response curves. Pp. 159-182. in: S. Scheiner and J. Gurevitch (eds), Design and Analysis of Ecological Experiments. Chapman and Hall, New York.
8. Karimian, Z. & A. Sahragard. 2001. Functional response of *Trichogramma brassicae*, the most frequent species of egg parasitoids of rice fields' pests, to different densities of *Sitotroga cerealella*. Proceedings of the 2nd National Conference on Optimum Utilization of Chemical Fertilizers & Pesticides in Agriculture. February 2001, Karaj, P.1.
9. Kfir, R. 1983. Functional response to host density by the egg parasite *Trichogramma pretiosum*. Entomophaga, Vol. 28: 345-353.
10. Lashkari, A. A., Talebi, A. A., Fathipour, Y. & Moharramipour, S. 2004. Functional response of *Trichogramma brassicae* Bezdenko (Hym.; Trichogrammatidae) to different densities of three host eggs in laboratory condition. Proceedings of the 16th Iranian Plant Protection Congress, Vol. 1- Pests, 28 Aug.-1 Sept. 2004, University of Tabriz, Tabriz. P. 35.
11. Rogers, D. J. 1972. Random search and insect population models. J. Anim. Ecol, Vol. 41: 369-383.
12. SAS Institute Inc. 1989. SAS/ STAT user's guide, Ver 8, 4th ed, Vol. 2. SAS Institute Inc., Cary, North Carolina, USA.
13. Shishehbor, P. & P. A. Brenna. 1996. Functional response of *Encarsia formosa* (Gahan) parasitizing castor's whitefly, *Trialeurodes ricini* Misra (Hom.; Aleyrodidae). J. Appl. Entomol, Vol. 120: 297-299.
14. Solomon, M. E. 1949. The natural control of animal population. J. Anim. Ecol, Vol. 18: 1-35.
15. Taylor, A. D. 1988. Host effects on functional ovipositional response on *Bracon hebetor*. J. Anim. Ecol, Vol. 57: 173-184.
16. Van Alphen, J. J. M. & Jervis, M. A. 1996. Foraging behaviour. Pp. 1-62. in: M. Jervis, and N. Kidd (eds), Insect Natural Enemies. London: Chapman and Hall, UK.
17. Wang, B. & D. N. Ferro. 2001. Functional response of *Trichogramma ostrinia* (Hym.; Trichogrammatidae) to *Ostrinia nubilalis* (Lep.: Pyralidae) under laboratory and field conditions. Environ. Entomol, Vol. 27: 752-758.