

/
ROC

ROC

ROC .

(Onishi & Braimoh ,2007b)

Theobald .(Strahlers & Lambin, 1994)

(1998) Hobbs

()

()

)

(

Y

$$\text{Logit}(p) = \ln(p/(1-p)) = a + \{b_1 \times X_1\} + \{b_2 \times X_2\} + \{b_3 \times X_3\} + \dots \{b_n \times X_n\}$$

Y Y

P

a

X_n... X X X

Jongman, et al., 1998))

b_n... b b b

.(Pan, et al.,1999

.(Sluiter, de Jong, 2007)

Nelson & Aldrich)

)

.(1986

(

(

)

(Geoghegan, et al, 2001)

(,2001 Lambin & Serneels)

&Yeh Wu Allen & Lu ,2003)

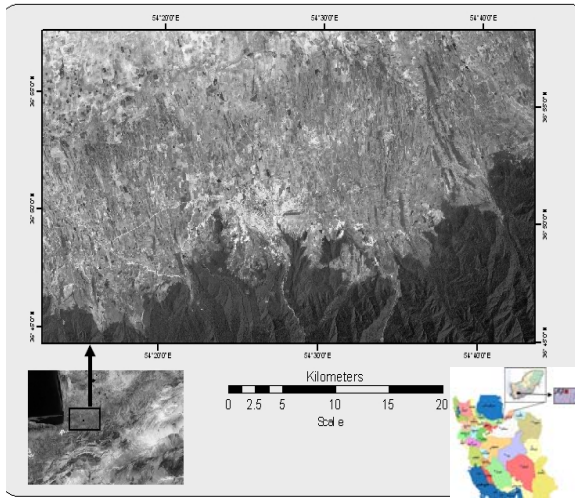
:(Kleinbaum,1994)

(1997

$$f(z) = \frac{1}{1 + e^{-z}}$$

:

$$P(Y=1/ X_1, X_2, \dots, X_K) = \frac{1}{1 + e^{-(\alpha + \sum_{i=1}^k \beta_i X_i)}}$$



TM

: ()

()

: ()

()

		(A)
		(B)
		(C)
		(D)
		(E)
		(F)
		(G)
		(H)
		(I)
		(J)
		(K)
		(L)
	*	(M)

³ROC

ROC

ROC

(Lo & Hu,2007)

)

.(

R^2 :Pseudo- R^2

R^2

R " "

& 1975) (Domenicich (1973) McFadden

(osking & Clark, 1986) McFadden

/ Pseudo-R2

/

.()

'

 *

 ()

 *

 *

SHAPE

) SLEUTH

(Clarke, et al.,1997) (

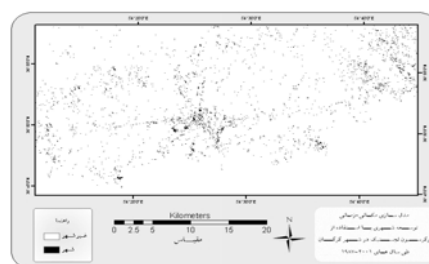
DEM

(/)

()

()

()



Y : ()

KM2

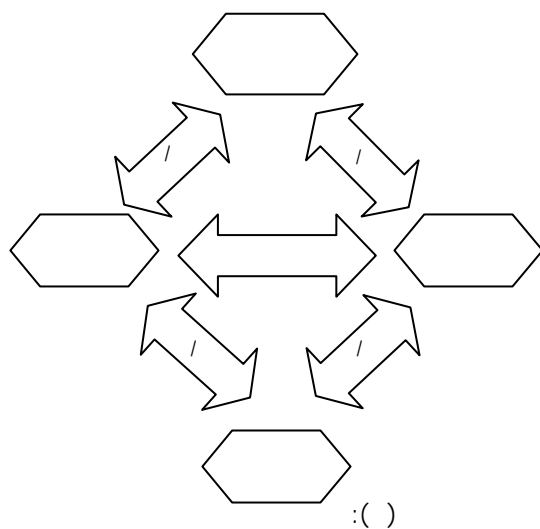
Pseudo- ROC

/ /

:

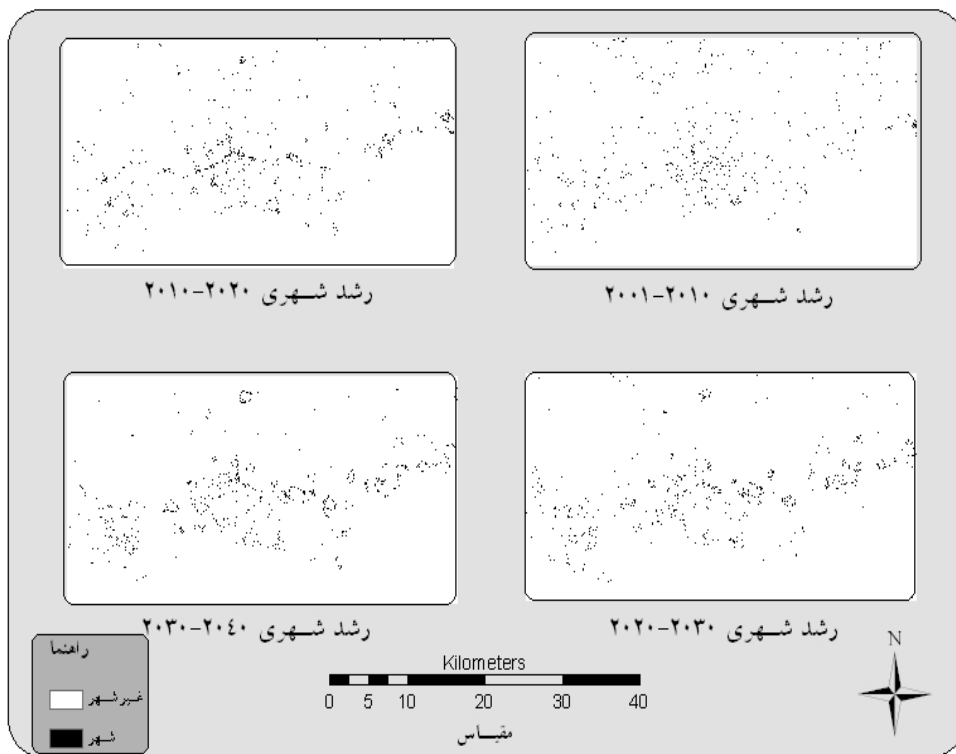
$$\text{Logit (87-2001)} = -4.9629 - (0.00033 \times F) + (0.96794 \times I) + (0.00006 \times D) - (1.66448 \times L) + (1.92012 \times K) + (1.59072 \times J) - (0.00020 \times B) + (0.00793 \times A) - (0.000099 \times H) + (0.56282 \times M)$$

R²



:()

()



:()

ROC

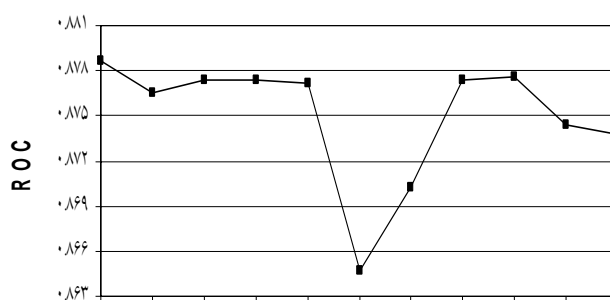
SLEUTH

()

*

*

ROC



متغیر مستقل حذف شده

()

)

(

)

/

(

()

- 1-Cellular Automata
- 2-Maximum likelihood
- 3- Relative Operating Characteristic
- 4-Pseudo
- 5-Supervised classification
- 6-Post-classification Comparison

Aldrich, J.H., F.D., Nelson. 1986. *Linear Probability, Logit and Probit Models* (3rd edition). Beverly Hills, CA. Sage Publications.

Allen, J., K., Lu. 2003. Modeling and prediction of future urban growth in the Charleston Region of South Carolina: a GIS-based Integrated Approach. *Conservation Ecology*, 8(2), 2

Braimoh, A.K., T., Onishi. 2007b. Geostatistical techniques for incorporating spatial correlation into land use change models. *International Journal of Applied Earth Observation and Geoinformation*, 9, 438-446.

Clarke, K.C., S., Hoppen, & L., Gaydos. 1997. A self-modifying cellular automaton model of historical urbanization in the San Francisco Bay area. *Environment and Planning B: Planning and Design*, 24, 247–261.

Clark, W.A., P.L., Hosking. 1986. *Statistical methods for geographers*. New York: Wiley.

Domencich, T.A., Mc Fadden, D. 1975. *Urban travel demand: Behavioural analysis*. Amsterdam: North-Holland.

Geoghegan, J., et al. 2001. Modeling tropical deforestation in the southern Yucatan peninsular region: comparing survey & satellite data. *Agriculture, Ecosystems and Environment*, 85, 25–46.

Hu, Z., Lo, C.P. 2007. Modeling urban growth in Atlanta using logistic regression. *Computers, Environment and Urban Systems*, 31, 667-688.

Jongman, R.H., R.G., Bunce & R., Elena-Rossello. 1998 . A European perspective on the definition of landscape character and biodiversity. Key concepts in landscape ecology. In J. W. Dover, & R. G. H. Bunce (Eds.), *Proceedings of the 1998 European congress of the International Association Of Landscape Ecology* (pp. 1–35). UK: IALE.

Kleinbaum, D.G. 1994 . *Logistic regression: A self-learning text*. New York: Springer.

Lambin, E.F., A.H., Strahlers. 1994 . Change-vector analysis in multitemporal space: A tool to detect and categorize land-cover change processes using high temporal-resolution satellite data. *Remote Sensing of Environment*, 48, 231-244.

McFadden,D.S. 1973. Conditional logit analysis of qualitative choice behavior. In P. Zarembka (Ed.), *Frontiers in econometrics*. New York: Academic Press.

Pan,D., et al.1999. Temporal (1958–1993) and spatial patterns of land use changes in Haut-Saint- Laurent (Quebec, Canada) and their relation to landscape physical attributes. *Landscape Ecology*, 14, 35–52.

Serneels,S., E.F.,Lambin. 2001. Proximate causes of land-use change in Narok District, Kenya: a spatial statistical model. *Agriculture, Ecosystems and Environment*, 85, 65–81.

Sluiter,R., M.,de Jong. 2007. Spatial patterns of Mediterranean land abandonment and related land cover transitions. *Landscape Ecology*, 22, 559–576.

Theo bald,D.M., N.T.,Hobbs. 1998. Forecasting rural land-use change: a comparison of regression and spatial transition-based models. *Geographical and Environmental Modeling*, 2(1), 65–82.

Wu,F., A.G.,Yeh. 1997. Changing spatial distribution and determinants of land development in Chinese cities in the transition from a centrally planned economy to a socialist market economy: a case study of Guangzhou. *Urban Studies*, 34(11), 1851–1880.