
()

*

(// // //)

[]

[]

[]

[]

[]

[]

[]

[]

[]

[]

()

[]

[]

[]

()

[]

[]

[]

[]

[]

[] :

M F

F M
R

[] []

)
(RFM « »
RFM
[]

R

M F

[]

[]

F

(RM)

[]

)

[] [] ([]

[] []

[] []

[]) « »

m) « » (

« » (

[]

() m

[] []

: []

K

Mi :

Mi+1 []

Mi []

[]

M*

X

[]

X

:

// //

[]

()

()

[]

[]

/

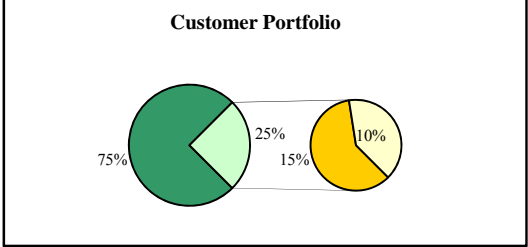
()

/

()

()

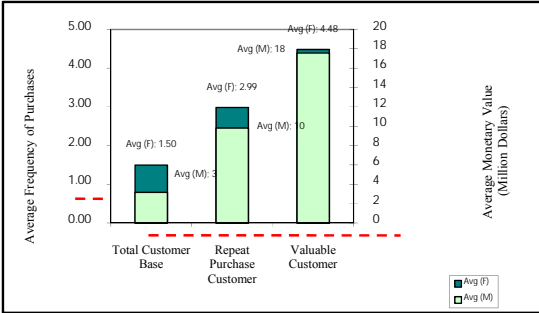
()



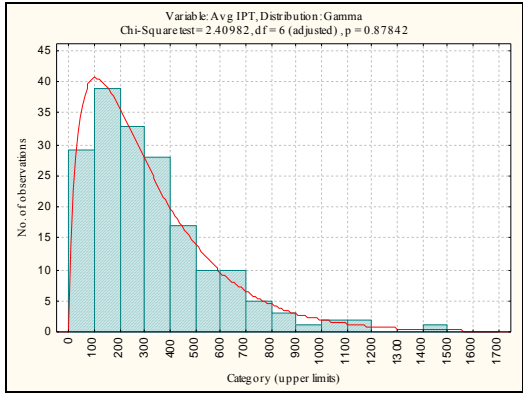
One Time Customers
 Repeat Purchase Customers
 Valuable Customers

Loyal Customers

() . []



. []



[]

[]

[]

[]

	Avg IPT Var IPT Last ΔIPT	[]
$Last \Delta IPT = (IPT_{last} - IPT_{Last-1}) / IPT_{Last-1}$	Frequency rFrequency	[]
	Monetary rMonetary	[]
i) (Cat.i	Category No.Cat No.Product	[]
	LoR(active)	[]
() () ()	Type I(0-1) Type II(0-5) Type III(0-3)	[]

Category

No.Cat

[]

[]

[]

[]

[]

() ()

. []

s%

. []

s%

x

. []

()

y

(

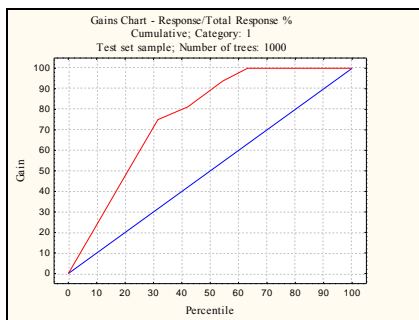
()

()

()

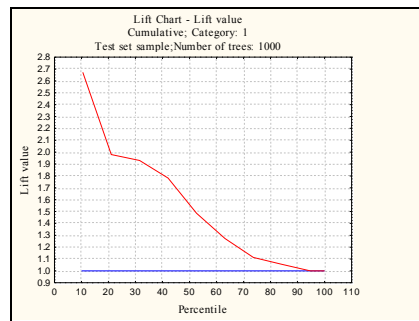
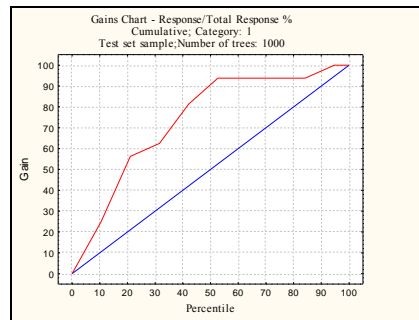
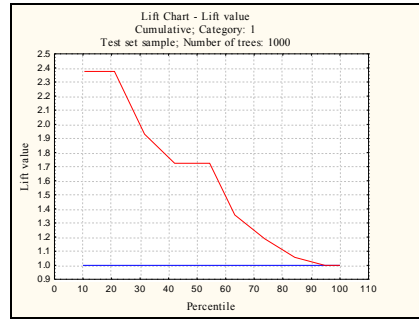
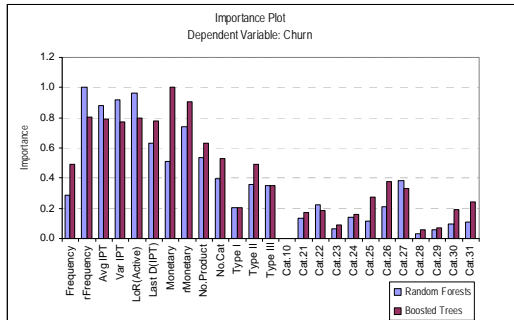
(= % . ÷ %)

() ()



Accuracy	Train Set	Test Set
Random Forests	0.8104	0.8246
Boosted Trees	1	0.7720
MLP Neural Network	0.7886	0.6140

()



()

-
- 1- Dawes, J. and Swailes, S. (1999). "Retention sans frontieres: Issue for financial service retailers." *International Journal of Bank Marketing*, Vol. 17, No. 1, PP. 36–43.
 - 2- Engel, J.F., Blackwell, R.D. and Miniard, P.W. (1995). *Consumer Behavior*. 8th. Ed. The Dryden Press, Orlando, FL.
 - 3- Paulin, M., Perrien, J., Ferguson, R.J., Salazar, A.M.A. and Seruya, L.M. (1998). "Relational norms and client retention: External effectiveness of commercial banking in Canada and Mexico." *International Journal of Bank Marketing*, Vol. 16, No. 1, PP. 24–31.
 - 4- Ganesh, J., Arnold, M.J. and Reynolds, K.E. (2000). "Understanding the customer base of service providers: An examination of the differences between switchers and stayers." *J. of Marketing*, Vol. 64, No. 3, PP. 65–87.
 - 5- Colgate, M., Stewart, K. and Kinsella, R. (1996). "Customer defection: A study of the student market in Ireland." *International Journal of Bank Marketing*, Vol. 14, No. 3, PP. 23–29.
-

- 6- Athanassopoulos, A.D. (2000). "Customer satisfaction cues to support market segmentation and explain switching behavior." *J. of Business Research*, Vol. 47, No. 3, PP. 191–207.
- 7- Bhattacharya, C.B. (1998). "When customers are members: Customer retention in paid membership contexts." *J. of the Academy of Marketing Science*, Vol. 26, No. 1, PP. 31–44.
- 8- Rasmusson, E. (1999). "Complaints can build relationships." *Sales and Marketing Management*, Vol. 151, No. 9, PP. 89–90.
- 9- Colgate, M.R. and Danaher, P.J. (2000). "Implementing a customer relationship strategy: The asymmetric impact of poor versus excellent execution." *J. of the Academy of Marketing Science*, Vol. 28, No. 3, PP. 375–387.
- 10- Berson, A., Smith, S. and Thearling, K. (2000). *Building data mining applications for CRM*. 1st. Ed. McGraw-Hill Pub. Co., New York.
- 11- Hung, S.-Y., C. Yen, D. and Wang, H.Y. (2006). "Applying data mining to telecom churn management." *Expert Systems with Applications*, Vol. 31, No.3, PP. 515–525.
- 12- den Poel, V. and Lariviere, (2004). "Customer attrition analysis for financial services using proportional hazard models." *European Journal of Operational Research*, Vol. 157, No. 1, PP. 196-217.
- 13- Wei, C.-P. and Chiu, I.T. (2002). "Turning telecommunication call details to churn prediction: a data mining approach." *Expert Systems with Applications*, Vol. 23, No.2, PP. 103-112.
- 14- Li and Shaomin, (1995). "Survival analysis." *Marketing Research*, Vol. 7, PP. 17-23.
- 15- Bolton, R. N. (1998). "A dynamic model of duration of the customer's relationship with a continuous service provider: The role of satisfaction." *Marketing Science*, Vol. 17, No.1, PP. 45–65.
- 16- Reinartz, W. J. and Kumar, V. (2000). "On the profitability of long-life customers in a noncontractual setting: An empirical investigation and implications for marketing." *J. of marketing*, Vol. 64, PP. 17-35.
- 17- Buckinx and Van den Poel, (2005). "Customer base analysis: partial defection of behaviourally loyal clients in a non-contractual FMCG retail setting." *European Journal of Operational Research*, Vol. 164, No. 1, PP. 252-268.
- 18- Hadden, J., Tiwaria, A., Roya, R. and Rutab D., (2005). "Computer assisted customer churn management: State-of-the-art and future trends." *Computer & Operation Research*, Vol. 34, No. 10, PP. 2902 – 2917.
- 19- Hoekstra, J.C. and Huizingh, E.K.R.E. (1999). "The lifetime value concept in customer-based marketing." *J. of Market Focused Management*, Vol. 3, No. 3-4, PP. 257–274.
- 20- Reichheld, F.F. (1996). "Learning from customer defections." *Harvard Business Review*, Vol. 74, No.2, PP. 56–69.
- 21- Niraj, R., Gupta, M. and Narasimhan, C. (2001). "Customer profitability in a supply chain." *J. of Marketing*, Vol. 65, No.3, PP. 1–16.
- 22- Yeh, I-C., Yang, K-J. and Ting, T-M. (2009). "Knowledge discovery on RFM model using Bernoulli sequence." *Expert Systems with Applications*, Vol. 36, No. 3, PP. 5866 – 5871.
- 23- O'Brien, L. and Jones, C. (1995). "Do rewards really create loyalty?" *Harvard Business Review*, Vol. 73, No. 3, PP. 75–83.
- 24- Wu, C. and Chen, H.L. (2000). "Counting your customers: Compounding customer's in-store decisions, interpurchase time and repurchasing behaviour." *European Journal of Operational Research*, Vol. 127, No. 1, PP. 109–119.

-
- 25- Coussement, K. and Van den P. (2008). "Churn prediction in subscription services: An application of support vector machines while comparing two parameter-selection techniques." *Expert Systems with Applications*, Vol. 34, No. 1, PP. 313-327.
 - 26- Rygielski, C, Wang, J. and Yen, DC. (2002). "Data mining techniques for customer relationship management." *Journal of Technology in Society*, Vol. 24, No. 4, PP. 483-502.
 - 27- Duda, R.O., Hart, P.E. and Stork, D.G. (2001). *Pattern Classification*. 2^d. Ed. Wiley-Interscience Pub. Co., New York.
 - 28- Dudoit, S., Fridlyand, J. and Speed, T.P. (2002). "Comparison of discrimination methods for the classification of tumors using gene expression data." *J. of the American Statistical Association*. Vol. 94, No. 457, PP. 77-87.
 - 29- Breiman, L. (2001). "Statistical modeling: The two cultures." *Statistical Science*, Vol. 16, No. 3, PP. 199-231.
 - 30- Breiman, L. (2001). "Random forests." *Machine Learning Journal*, Vol. 45, PP. 5–32.
 - 31- Luo, T., Kramer, K., Goldgof, D. B., Hall, L. O., Samson, S., Remsen, A. and Hopkins, T. (2004). "Recognizing plankton images from the shadow image particle profiling evaluation recorder." *IEEE Transactions on Systems Man and Cybernetics Part B– Cybernetics*, Vol. 34, No. 4, PP. 1753–1762.
 - 32- Ishwaran, H., Blackstone, E. H., Pothier, C. E., and Lauer, M. S. (2004). "Relative risk forests for exercise heart rate recovery as a predictor of mortality." *J. of the American Statistical Association*, Vol. 99, No. 467, PP. 591–600.
 - 33- Han, J. and Kamber, M. (2006). *Data Mining concepts and techniques*. 2^d. Ed. Morgan Kaufmann Pub. Co., United States of America.
 - 34- Schmittlein, D.C. and Peterson, R.A. (1994). "Customer base analysis: An industrial purchase process application." *Marketing Science*, Vol. 13, No. 1, PP. 41–67.
 - 35- Buckinx, W., Moons, E., Van den Poel, D. and Wets, G. (2004). "Customer-adapted coupon targeting using feature selection." *Expert Systems with Applications*, Vol. 26, No. 4, PP. 509-518.
 - 36- Wang, Y-F., Chiang, D-A., Hsu, M-H., Lin C-J. and Lin, I-L. (2009). "A recommender system to avoid customer churn: A case study". *Expert Systems with Applications*, Vol. 36, No. 4, PP. 8071 – 8075.
 - 37- Lemon, K.N., White, T.B. and Winer, R.S. (2002). "Dynamic customer relationship management: Incorporating future considerations into the service retention decision." *J. of Marketing*, Vol. 66, No. 1, PP. 1-14.
 - 38- Keaveney, S.M. and Parthasarathy, M. (2001). "Customer switching behaviour in online services: An exploratory study of the role of selected attitudinal, behavioural, and demographic factors." *J. of the Academy of Marketing Science*, Vol. 29, No. 4, PP. 374–390.
 - 39- Popkowski, L.P.T.L., Sinha, A. and Timmermans, H.J.P. (2000). "Consumer store choice dynamics: An analysis of the competitive market structure for grocery stores." *J. of Retailing*, Vol.76, No. 3, PP. 323–345.
 - 40- Mozer, M.C., Wolniewicz, R., Grimes, D.B., Johnson, E. and Kaushansky, H. (2000). "Predicting subscriber dissatisfaction and improving retention in the wireless telecommunications industry." *IEEE Transactions on Neural Networks*, Vol. 11, No. 3, PP. 690–696.
-

- 41- Coussement, K., Benoit, D. F. and den Poel, V. (2010). "Improved marketing decision making in a customer churn prediction context using generalized additive models." *Expert Systems with Applications*, Vol. 37, No. 3, PP. 2132 – 2143.
- 42- Rust, R.T. and Zahorik, A.J. (1993). "Customer satisfaction, customer retention, and market share." *J. of Retailing*. Vol. 69, No. 2, PP. 193–215.
- 43- Mittal, B. and Lasser, W.M. (1998). "Why do customers switch? The dynamics of satisfaction versus loyalty." *J. of Services Marketing*, Vol. 12, No. 3, PP. 177–194.
- 44- Huber, C.P., Lane, K.R. and Pofcher, S. (1998). "Format renewal in banks—it's not that easy." *McKinsey Quarterly*, No. 2, PP.148–154.
- 45- Anderson, E. and Weitz, B. (1989). "Determinants of continuity in conventional industrial channel dyads." *Marketing Science*, Vol. 8, No. 4, PP. 310–323.

- 1- Churn
- 2- Frequency of Purchase
- 3- Recency
- 4- Classifier
- 5- Random Forest
- 6- Robust
- 7- Bootstrap
- 8- Boosted Trees
- 9- Predictive Data mining
- 10-Boosting
- 11-Model Accuracy
- 12-Cumulative Gains Chart
- 13-Lift Curve
- 14-One Time Customers
- 15-Customer Behavior
- 16-Customer Demographics
- 17-Customer Perception
- 18-Macro Environment Variables
- 19-Interpurchase Time
- 20-Alive
- 21-Monetary Indicator
- 22-Shopping Behavior Across Product Categories
- 23-Category Spending Variable
- 24-Total Product Ownership
- 25-Length of Relationship (LOR)
- 26-Multilayer Perceptron Neural Networks (MLP NN)
- 27-Baseline