

() , ()

*

(// : // :)

()

()

(Afkari Sayyah (Masodi, & Tabatabai, 2002)
(Minaei, et al, 2004) & Minaei, 2002)
(Minaei, et al., 2003)

()

.(Desmet, et al., 2004) /

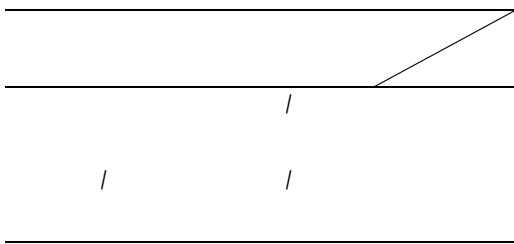
(Van linden,

.et al., 2006)

(Bargel &

1. Epidermis
2. Cuticule

(ASAE, 1999)



(Afkari-Sayyah, et al., 2006)

(Afkari &

.Sayyah, 2004)

()

mm/min

(ASAE, 1999)

()

: Excel ()

$$\int_a^b f(x)dx = \frac{n}{2}(F_1 + 2F_2 + 2F_3 + \dots + 2F_n + F_{n+1}) \quad ()$$

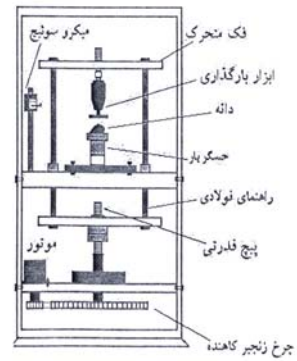
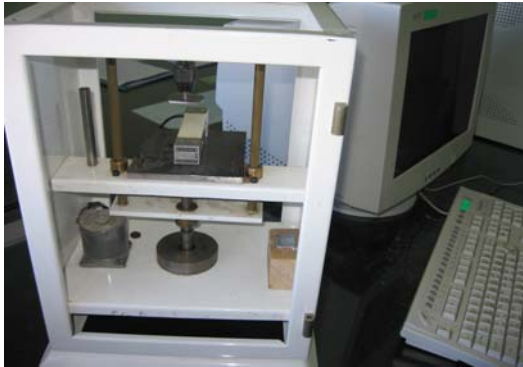
()

8. OHAVSCO 2kg Capacity Harrod Trip Balance
9. Tarbiat Modarres University

-
1. Lyiopersicon Esculentum Mill
 2. Petoerly-Ch
 3. Supper - Bta
 4. Pink
 5. Ripening
 6. Maturity
 7. Plasmolism

()

()



//

// () (Pink)

// () (Ripening)

// () (Maturity)

// () (Plasmolism)

Excel

()

()

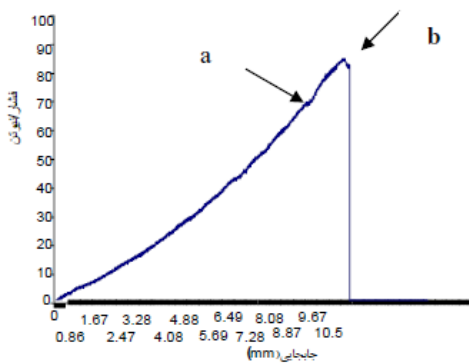
) MSTAT-C

(

()

()

(S)



()

()

(:b :a)

()

(Shekari,

.et al., 2006)

()

/	/	/	/	(Mj/cm ³)
/	/	/	/	(N)
/	/	/	/	(mm)
/	/	/	/	(mm)
/	/	/	/	(N)

()

()

(MS)

Y _d	Y _F	D _{max}	F _{max}				
ns	/**	/***	/*	ns			
/ ns	/ *	/ *	/ *	**			
/ ns	/ ns	/ ns	/ ns	ns	×		
/	/	/	/	/			
/ **	/ **	/ ns	/ ns	/ *	*		
/ ns	/ **	/ **	/ *	/ **	ns	×	
/ *	/ **	/ ns	/ ns	/ *	**	×	
/ ns	/ ns	/ ns	/ ns	/ ns	ns	×	×
/	/	/	/	/	/		
% /	% /	% /	% /	% /	(C.V)		

:Y_d

:Y_f

:D_{max}

:F_{max}

() ()

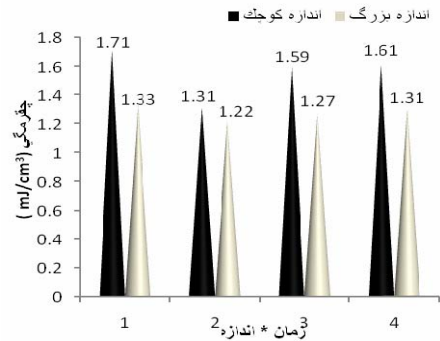
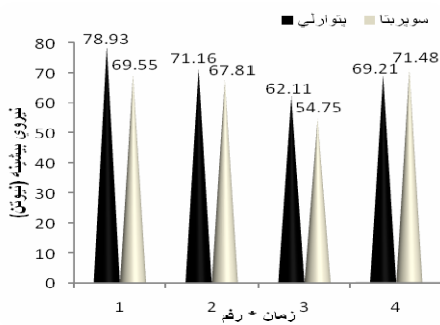
/ mJ/cm³

()

/

mJ/cm³ \ ۳ ± ۳

(Cakr, 2001)



/ /

/ /

(VanLinden,

۶۲/۶۵ ± ۴/۸

et al., 2006)

/

(Fridley & O Brien, 1964)

(Nyborg, 1969)

Y _d	Y _f	F _{max}	
/ b	/ a	/ a	/ b
/ c	/ ab	/ ab	/ a
/ a	/ c	/ b	/ b
/ a	/ bc	/ b	/ b

/ /

c

a

%

/

/ /

/ /

/ /

() ()
 ()
 ,(Mansouri & Minaei, 2005)

REFERENCES

- Afkari-Sayyah, A. H. Minaei, S. & Sahari, M. E. (2006) Investigation of the factors determining the wheat grain hardness according to its mechanical properties, *16th National Congress of Food Industry*, Gorgan. (In Farsi)
- Afkari-Sayyah, A. H. & Minaei, S. (2002). Applying mechanical instrumentation method for measuring the quality of milling blend of wheat. *First International Congress of Wheat*, Tehran. (In Farsi)
- ASAE Standards, (1999). Moisture measurement of unground grain & seeds. American Society of Agricultural Engineers. *ASAE*, S352. 2.
- Bargel, H., & Neinhuis, C. (2005). Fruit growth & ripening as related to biomechanical properties of fruit skin & isolated cuticule. *Journal of Experimental Botany*, 56, 1049-1060.
- Cakr, F. N. (2001). Dimensional analysis of mechanical behaviour of some onion varieties. *Journal of Biological Sciences*, 1(10), 925-925.
- Desmet, M., Lammertyn, J., Vanlinden, V., Verlinden, B. E., Darius. P. & Nicolai B. M. (2004). The relative influence of stem & fruit properties on stem puncture injury in tomatoes. *Postharvest Biology Technology*, 33, 101-109
- Friedley, R. & O. Brien, M.A. (1964) Development of Mechanical Fruit harvesting in California, *on Congress of Mechanization of Gardening, Budapest*.
- Mansouri, Y. & Minaei, S. (2005) The effect of loading rate & fruit size on the mechanical properties of two varieties of date palm fruits in Khuzestan province (Estamaran & Zahedi), *Journal of Agricultural Science*, 28(2). (In Farsi)
- Masodi, H. & Tabatabai, A. (2002). *Some mechanical properties of three varieties of apples for export*, M.Sc. Thesis - Faculty of Agriculture, University of Tehran. (In Farsi)
- Minaei, S. Zaki-dizaji, H. & Afkari-Sayyah, A. H. (2003). Determination of physical & mechanical properties of cheakpea seeds in relation to quality losses. In: *Proceedings of the First National Conference on Agricultural Losses*, Tehran. (In Farsi)
- Minaie, S. Lohrasbi, S. Afkari-sayyah, A. H. & Javadi, A. (2004). Determination of physical & mechanical properties of corn under uni-axial loading. In: *Proceedings of the 3rd National Congress of Agricultural Machinery & Mechanization Engineering, Kerman*. (In Farsi)
- Nyborg, E. (1969). Design parameters for mechanical raspberry harvesters. *Transactions of the ASAE*, 12 (5), 573- 576.
- Shekari, F. Masiha, S. & Esmailpor, B. (2006). *Vegetable Physiology*, Zanjan University Press, vol 1. (In Farsi)
- Van Linden, V. Deketelaere, B. Desmet, M. & Demoe ker, J. D. (2006). Determination of bruise susceptibility of tomato fruit by means of an instrumented pendulum. *Postharvest Biology & Technology*, 40(1), 7-14.