

Optimization of alkaline protease production from a locally isolated *Bacillus* sp. ZR-5: Potential application as a detergent additive

Received: March 10, 2015; Accepted: June 20, 2015

Hossein Mohammadian¹, Mohammad Rabbani^{1*}, Ali Hafizi², Hamid MirMohammad Sadeghi¹, Amin Davary¹,
Fatemeh Moazen¹, Ziaedin Samsam Shariat³, Zahra Etemadifar⁴

1. Department of Pharmaceutical Biotechnology, Isfahan Pharmaceutical Sciences Research Center, School of Pharmacy and Pharmaceutical Sciences, Isfahan University of Medical Sciences, Isfahan, Iran
2. Chemical Engineering Department, School of Chemical and Petroleum Engineering, Shiraz University, Shiraz 71345, Iran
3. Department of Biochemistry, Isfahan Pharmaceutical Sciences Research Center, School of Pharmacy and Pharmaceutical Sciences, Isfahan University of Medical Sciences, Isfahan, Iran
4. Department of Biology, School of Basic Sciences, University of Isfahan, Isfahan, Iran

ABSTRACT

The aim of this study was to optimize protease production using a novel *Bacillus* sp. ZR-5 strain isolated from the soil, and evaluate its application in detergent industry. The proteolytic activity of the strain was demonstrated using gelatin hydrolysis screening test. Protease production optimization was carried out using a two-step approach: a conventional method in order to identify the best carbon and nitrogen sources followed by the application of response surface methodology (RSM) to optimize the factors, which include temperature, pH and incubation time. Glucose or fructose (5 g/L), wheat bran (5 g/L), temperatures of 25 and 55°C, pH 10.0 and an approximate incubation time of 44 h, were determined as the optimal conditions according to optimization processes. Validation tests were carried out under these conditions and the results were in good agreement with RSM predicted data. The in-gel activity (zymogram) test showed two hydrolytic zones with 66.2 and 36.5 kDa molecular weight on the casein containing polyacrylamide gel. The high compatibility in the presence of detergent powder and washing performance test suggested that the crude enzyme could be an appropriate choice as a detergent additive in detergent industries.

Keywords: alkaline proteases, *Bacillus* sp. ZR-5, detergent compatibility, media optimization, response surface methodology.

* Corresponding author: rabbani@pharm.mui.ac.ir

Introduction

Proteases are physiologically and commercially important classes of hydrolytic enzymes. They constitute approximately 60% of the total worldwide enzyme sales for various industrial applications such as food, pharmaceutical, leather, diagnostics, waste management, recovery of silver films and more importantly in detergent industries (1-3). These enzymes are produced by animals, plants and various microorganisms. Many microbial species produce proteases, however, only those microorganisms producing significant quantity of enzyme are applicable for industrial use. Bacteria are excellent sources of the enzymes, due to their broad biochemical diversity and susceptibility to genetic manipulation (4). Currently, a large share of the commercially available alkaline proteases have been extracted from *Bacillus* species (5, 6). Among these proteases, those that are active at room temperature and also stable in the alkaline pH range have remarkable applications (7). Considering the industrial importance of proteases, many attempts have been performed to maximize the production and economization. The enzyme production yield could be optimized based on various physicochemical parameters of media using several approaches. Conventional "one-variable-at-a-time" method is a commonly used operation in biotechnology in determining the most important parameters influencing enzyme production (8). This method, however, is time-consuming, expensive, more importantly does not consider the interactions between various treatment parameters, and is only utilized for single variable factors (9). In order to resolve these problems, statistical approaches, such as response surface methodology (RSM), has been used in several recent studies for the improvement of

protease production (10-15). RSM is a collection of statistical techniques for designing and building the most appropriate model in order to achieve the optimizing conditions with a minimal number of experiments (16, 17).

In this study, a novel strain of *Bacillus* proven to have extracellular lipase producing ability, as well as thermostable, alkalophilic and caseinolytic properties (18), was isolated. The aim of this present study was to optimize the culture conditions using conventional and statistical strategies in order to increase the production of alkaline proteases as a potential candidate for industrial applications.

Materials and Methods

Microorganism

The bacterial strain was isolated from indigenous soil sample during our previous study. This new indigenous strain was identified as *Bacillus* sp. using 16S rDNA method and was named *Bacillus* sp. ZR-5. Further experiments based on partial sequence of 16S rDNA homology showed that it was closely related to *Bacillus pumilus* species (18). The isolated strain was subculture, and then transferred into a 20% (v/v) glycerol and stored at -70°C for further use.

Inoculum preparation and screening test

Inoculum preparation. The inoculum medium was prepared by transferring a loop full of fresh bacterial culture into 50 ml nutrient broth medium and incubated at 37°C for 16 h at 180 rpm.

Screening. Initial screening test for protease activity was carried out on nutrient broth containing 100 g/L gelatin. For this purpose, a fresh colony of the bacteria grown

on nutrient agar was inoculated to the gelatin medium. The medium was maintained at 37°C for 24 h. Afterwards, the medium was transferred to 4°C for 1 h in order to investigate protease production.

Protease assay

Alkaline protease activity was determined using a modified form of the method introduced by Joo et al. (5). The reaction mixture containing 0.5 ml of casein (5 g/L) was dissolved in 20 mM Glycin-NaOH buffer (pH 10.0). The reaction started as soon as the 0.1 ml enzyme solution from the crude extract was added and incubated at 25°C for 30 min. Then, the enzyme reaction was stopped by the addition of 0.75 ml Trichloroacetic acid (100 g/L) and retained in 4°C for 1 h. Finally, the mixture was centrifuged at 12,000 rpm for 10 min and the optical density of the supernatant was measured at 280 nm. The same reaction mixture free of crude enzyme was used as blank. One unit of protease activity was defined as the amount of enzyme releasing soluble fragments equivalent to 0.001 absorbance at 280 nm after 30 min reaction under the conditions described above. The results were achieved from the mean of at least three repeats and the differences between them did not exceed 5%.

Selection of the best carbon and nitrogen sources

To obtain the most suitable nitrogen and carbon sources, a basal liquid medium that composed of (g/L) glucose, 5; yeast extract, 5; NaCl, 5; KH₂PO₄, 1; K₂HPO₄, 0.3; MgSO₄·7H₂O, 0.2 and CaCl₂, 2 was utilized. Several carbon sources (5 g/L), such as fructose, maltose and sucrose, were used in place of glucose in basal medium. Different

complex nitrogen sources (5 g/L), namely gelatin, wheat bran, gluten, dried corn powder, dried fish powder, nutritious soybean and livestock soybean were added to the basal medium. The pH of the media was adjusted to 7.0 using 200 g/L Na₂CO₃ solution. The media were inoculated with 2% (v/v) 16 h aged culture (inoculum medium) and incubated at temperature of 37°C at 180 rpm for 48 h. The cell-free supernatants (crude extract) from the centrifuged cultures were used for the determination of proteolytic activity during protease assay test.

Experimental design and protease production

An experimental design was developed for the maximization of protease production by optimizing the medium variables, that is, incubation temperature, initial pH and incubation time using response surface methodology. The central composite design (CCD) was used for the response surface methodology in the experimental design. The CCD was well suited to fit the complicated surfaces and usually works well during the optimization process, also it is an effective design that is perfect for chronological experimentation (19).

In CCD, the total number of experiments is calculated using $2^k + 2k + n_0$, where, k is the number of independent variables and n_0 is the number of repetitions of the experiments at the center point. The CCD of this study includes studying the effects of 3 factors in 2 levels (high, +1 and low, -1 levels) with 3 central points (coded level 0), and the axial points were based on $\alpha=2$ in a single block with $n_0=3$, which produces 17 sets of test conditions. The process parameters involved in this study are shown in Table 1.

Table 1. Experimental levels of independent variables

Variables	Symbol	variable levels				
		- α	-1	0	+1	+ α
Temperature (°C)	X ₁	19	25	40	55	61
pH	X ₂	4	5	7.5	10	11
Time (h)	X ₃	14.4	24	48	72	81.6

As indicated in Table 1, the three independent variables were coded as X₁, X₂ and X₃ for temperature, initial pH and time, respectively as shown in Equation 1:

$$x_i = \frac{X_i - X_0}{\Delta X_i} \quad (1)$$

where x_i is the coded value of the ith independent variable, X_i independent variable, X₀ the real value of independent variable on the central point and ΔX_i is the step change value.

The experimental result obtained from the CCD model can be explained by the following equation:

(2)

$$Y = \beta_0 + \sum_{i=1}^k \beta_i x_i + \sum_{i=1}^k \beta_{ii} x_i^2 + \sum_{i < j} \beta_{ij} x_i x_j + \varepsilon$$

where β₀ is the offset or constant term, β_i is the linear coefficient, β_{ii} is the quadratic effect, β_{ij} represents the cross product coefficient and ε is the statistical error.

In this study, the design of the experiment and response surface analysis was carried out using Design Expert software version 8.0.0. The experimental plan is shown in Table 2, and the protease activity is the responses of this study's design.

Table 2. Design arrangement and experimental results

Run	Input variables			Response variables
	Temperature (°C)	pH	Time (h)	Protease activity (U/ml)
1	55	5	72	16660
2	25	5	24	17620
3	25	10	72	25800
4	40	7.5	48	16000
5	40	4	48	18220
6	40	7.5	81.6	15360
7	40	7.5	14.4	14000
8	61	7.5	48	22550
9	25	10	24	27200
10	55	10	72	24900
11	19	7.5	48	25100
12	40	11	48	22800
13	55	5	24	17900
14	40	7.5	48	18260
15	55	10	24	27000
16	25	5	72	15800
17	40	7.5	48	15960

Zymogram analysis

A casein based proteolytic activity zymogram was performed according to the method of Garcia-Carreno et al. (20). Briefly, a suspension of soluble casein (1 g/L) was added into the separating gel before polymerization. Following electrophoresis at 4°C, the gel was incubated in renaturing buffer (2.5% v/v Triton X-100) at room temperature. The renaturing buffer was replaced with developing buffer (Tris 20 mM, NaCl 0.2 mM and CaCl₂ 5 mM) and was incubated at 25°C for at least 4 h. The gel was stained with coomassie brilliant blue R-250 (5 g/L) and finally destained. The zymogram profile was analyzed using Gel Doc XR molecular imager (Bio Rad Co).

Detergent stability

The compatibility of crude protease was tested with a commercial detergent (barf powder from paksan Co, Iran). Two final concentrations of detergent powder (5 and 10 g/L) were incorporated with enzyme-substrate mixture under assay test conditions. Residual activity was determined in the presence of a detergent-free sample as a positive control (100%).

Functional detergent test

Washing performance test for analysis of crude enzyme was carried out using a simple method described by Arulmani et al. (21). The efficiency of the crude protease (25×10³ U/ml) was studied by mixing the enzyme with the commercial enzyme free detergent (Barf), and then the mixture was used on white cotton cloth pieces (2×2 cm) that were stained with blood. The washing test was carried on these blood stained cotton cloths with different solutions as follows: (a) sole

water, (b) water containing detergent (5 g/L) and (c) water containing detergent (5 g/L) and enzyme. After incubation at 25°C for 30 min, the samples were rinsed with distilled water, and then dried for visual analysis test.

Results

Screening test

The gelatin in the broth medium was digested and the medium was in liquid form even at 4°C after 1 h incubation time (data not show). This result indicated that the bacterium produced a desirable amount of protease.

Selection of the best carbon and nitrogen sources using the one-variable-at-a-time approach

Regarding the first step of the optimization process, among the different sources, fructose and glucose (5 g/L) were the best carbon sources, and wheat bran (5 g/L) was the best nitrogen source for protease production, respectively (Fig. 1), hence, they were chosen for further optimization studies.

Optimization of significant variables using RSM

The conventional optimization was followed using response surface design. The central composite design was applied to develop correlation between the variables of protease activity. The protease activity was found to be in the range of 14,000 to 27,200 (U/ml) in the different experiments. The results of the experiments conducted in this study for the optimization of three variables of protease activity are given in Table 2. As mentioned in this table, run number 9 showed the highest level of protease activity. According to the sequential model, the sums of squares were chosen according to the highest order of polynomials, where the additional terms were significant.

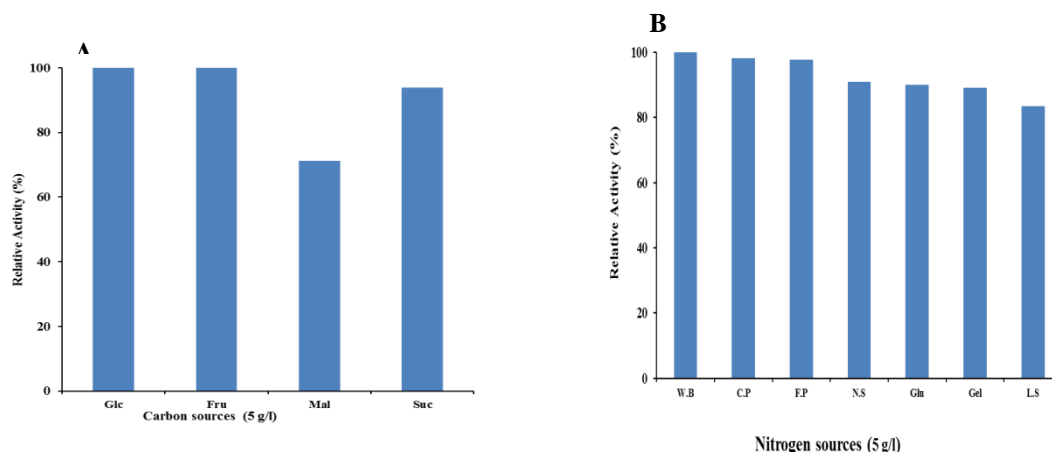


Figure 1. Effect of different carbon and nitrogen sources at constant concentrations on protease production. (A) The results for four different carbon sources: glucose (Glc), fructose (Fru), maltose (Mal) and sucrose (Suc). The activity in the presence of glucose is assumed to be 100% in comparison with other sources. (B) The results of seven nitrogen sources: wheat bran (W.B), corn powder (C.P), fish powder (F.P), nutritious soybean (N.S), gluten (Glu), gelatin (Gel), livestock soybean (L.S).

The fit summary output of the Design Expert software revealed that the quadratic model is statistically significant for the protease activity (Y). Therefore, quadratic model was used to represent the response for further analysis.

Analysis of variance (ANOVA) was used to investigate the validity of the obtained model in experimental design. Table 3 shows the ANOVA results for the reduced quadratic model of protease activity (Y). The values of Prob>F less than 0.05 indicate that the terms

of the model were significant, whereas values greater than 0.1 were not significant. Among several variables, temperature (X_1), pH (X_2), time (X_3) and second order effect of all variables: X_1^2 , X_2^2 and X_3^2 are were significant terms of the model. The linear interaction of these three variables including X_1X_2 , X_1X_3 and X_2X_3 terms were not significant and as such, were removed from the quadratic model in order to improve its accuracy.

Table 3. ANOVA table for response surface reduced quadratic model for 1-decene conversion

Source	Sum of squares	df	Mean squares	F-value	P-value Prob > F	
Model	0.37	6	0.061	14.6	<0.0002	significant
X_1 -Temperature	9.384×10^{-4}	1	9.384×10^{-4}	0.23	0.6454	
X_2 -pH	0.19	1	0.19	44.54	< 0.0001	
X_3 -Time	1.818×10^{-3}	1	1.818×10^{-3}	0.44	0.5240	
X_1^2	0.13	1	0.13	30.46	0.0003	
X_2^2	0.040	1	0.04	9.65	0.0111	
X_3^2	0.010	1	0.01	2.42	0.1507	
Residual	0.042	10	4.169×10^{-3}			
Lack of Fit	0.037	8	4.578×10^{-3}	1.81	0.4045	not significant
Pure Error	5.068×10^{-3}	2	2.534×10^{-3}			
Cor Total	0.41	16				

R=0.9474, R(adjusted)=0.9143, R (predicted)= 0.785, adequate precision= 9.91

According to the F-values shown in Table 3, among the different significant parameters, pH has the greatest effect on protease activity, while temperature was found to be the least important. By considering their importance, the effective parameters can be ranked as:

$$X_2 > X_1^2 > X_2^2 > X_3^2 > X_3 > X_1$$

The model's F-value of 14.6 implies that the model was significant. The other parameters were removed from the model due to their high P-values. The hierarchical terms (X_1 and X_3) were added after backward elimination of regression in consequence of X_1^2 and X_3^2 parameters, which have P-values of 0.0003 and 0.1507, respectively.

The regression coefficient values were evaluated and the subsequent refined equation, including only the significant parameters, in terms of actual factors, is expressed as follows:

$$\begin{aligned} \sqrt{\text{Protease activity}} = & 2.42209 - \\ & 0.047529 X_1 - 0.12842 X_2 + \\ & 0.0056891 X_3 + 0.0005867 X_1^2 + \\ & 0.01189 X_2^2 - 0.0000646 X_3^2 \end{aligned} \quad (3)$$

The determination coefficient shows the agreement of the model predicted values with experimental ones. The closer the R value is to 1, results in the better predictability and accuracy of the model. As indicated in Table 3, the determination coefficient of 0.9474 for protease production indicates that the obtained statistical model can properly explain the response. The adjusted R value of 0.9143 is in reasonable agreement with the R value of 0.9474, thus indicating the suitability of the model. The actual versus predicted protease activity is shown in Figure 2. In the figure, the R value of 0.9474 shows a close proximity of the model's prediction with the experimental data signifying the validity of the regression models.

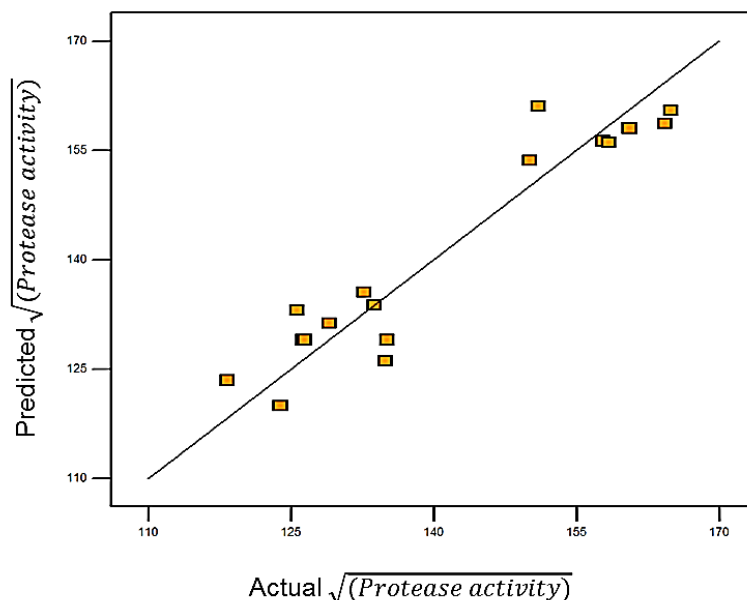


Figure 2. Predicted versus actual of protease activity

In addition, the adequate precision, the other important parameter for model evaluation, which is a measure of the signal to noise ratio, is evaluated for the model. The adequate precision ratio greater than 4 is desirable for a model to be a good fit. The quadratic model of protease activity has an “adequate precision value” of 9.91, indicating the applicability of the model for the navigation of the design space. The value of the removed insignificant parameter “Lack of Fit” is 0.4045, indicating that the eliminated terms are unimportant but preferred for the model.

Studentized residuals versus predicted was

applied for the investigation of random experiments and unusual structure. Figure 3 shows the studentized residuals versus predicted for protease activity. This figure shows that there is no need for any suppose violation of the independence, and the plot should be a random scatter. This figure illustrates that there is no obvious pattern and unusual structure. The equal scatters above and below the x -axis in these figures imply that the proposed model is sufficient and there is no reason to suspect any infringement of the independence or constant variance assumption

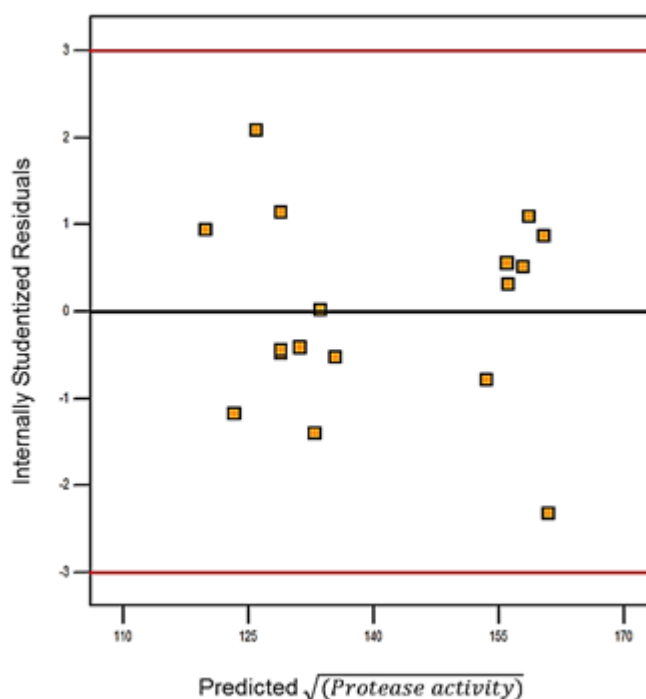


Figure 3. Internally studentized residual versus predicted plot of protease activity

3D and contour plots were also generated to evaluate the effects of different process variables on predicted protease activity response over a range in the design surface. In 3D and contour plots, the protease activity was studied by considering two factors at a

time while keeping the other at a fixed level. Therefore, graphical representations have been prepared as shown in Figures 4-6, which show the three dimensional model surfaces and contour plots.

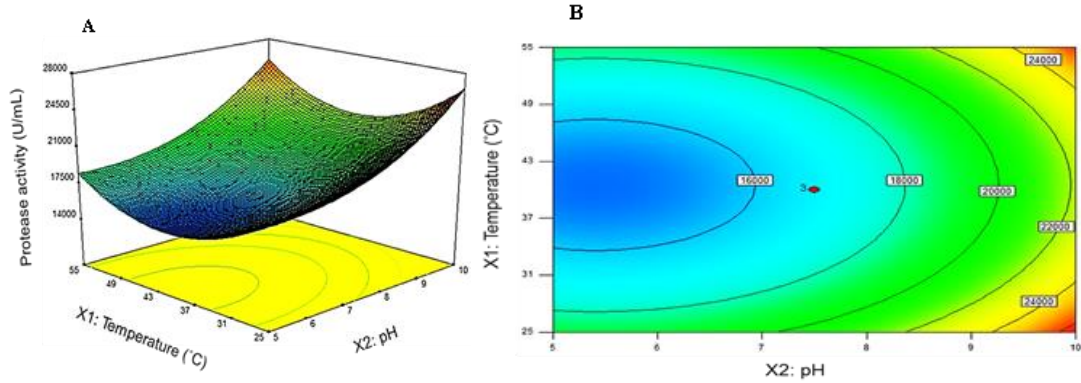


Figure 4. Temperature versus pH on protease activity at constant time of 48 h .(A) 3D Surface (B) contour plot

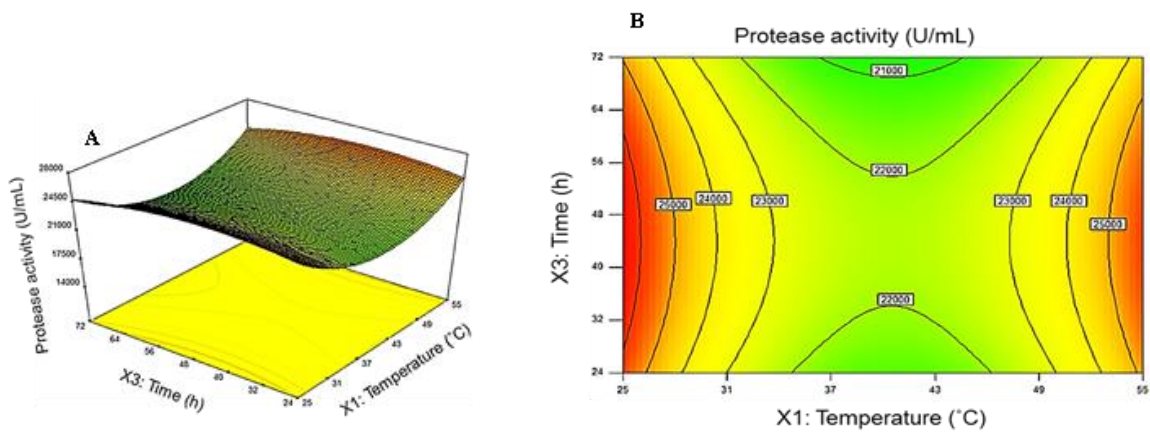


Figure 5. Temperature versus time on protease activity at constant pH of 1. (A) 3D Surface (B) contour plot

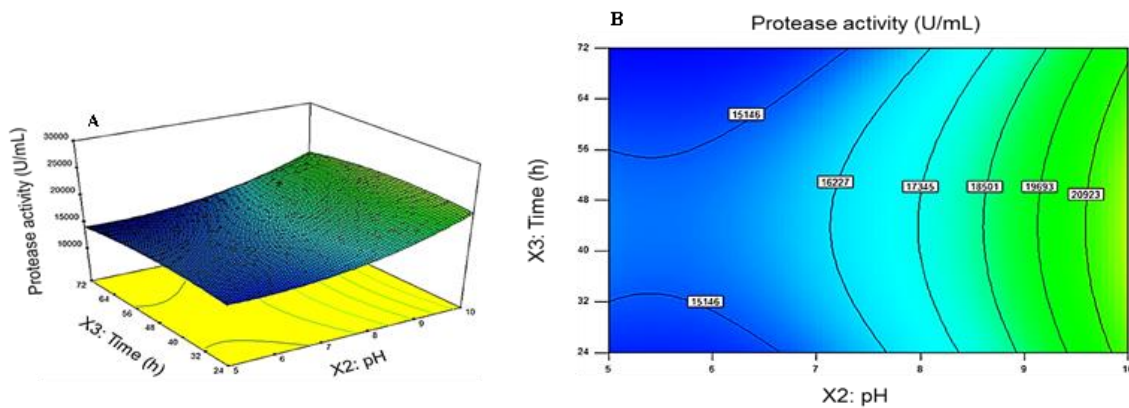


Figure 6. Time versus pH on protease activity at constant temperature of 40 °C. (A) 3D Surface (B) contour plot

Figures 4A and B show the interactive effect of temperature and pH and their mutual interaction on protease activity at constant time of 48 h. Figure 4A shows that increase

in pH at constant temperature extremely increase the protease activity. On the other hand, as indicated in this figure, by increasing the temperature from 25 to 55°C, the protease

activity initially decreases to a minimum at central temperature and then increases to maximum. Consequently, the optimum response can occur at 25°C or 55°C.

The prominent effect of temperature and time at pH 10 on protease activity is shown in Figures 5A and B. It is obvious from this figure, from the F-values shown in Table 3 and the coefficients of Equation 3, that temperature and time do not pose any considerable effect on the response, in comparison with pH and second power of all three variables. In fact, this surface and contour plot indicate that there is not any important interaction between temperature and time on protease activity at all levels.

The effects of time and pH on protease activity are shown in Figures 6A and B as at when temperature was at the middle point. pH parameter had a positive effect on protease activity, for example, by increasing the pH from 5 to 10, the protease activity increased from 15500 to 22000 (U/ml) at a temperature of 40°C. The curvature of 3D surface in Figure 6A is due to the additional effectiveness of pH on the response than the time.

Optimization and validation of the model

It is obvious that response surface methodology is a powerful technique for the investigation and optimization of multi-variable processes. So, this method was

applied in order to maximize protease activity according to the optimization of independent variables.

The optimization was performed using design expert software and the optimum variables for the maximization of protease production were achieved as shown in Table 4. As indicated in this table, the optimum conditions were obtained and thereafter, the experiments were performed under these conditions. Two optimum conditions were determined using the design expert optimization. Validation tests were carried out under these conditions in order to evaluate the exactness of the obtained optimums. The first optimum operating conditions were 25°C, pH 10.0 and incubation time of 43.98 h. As Table 4 shows, the first obtained protease activity of the validation test at optimum operating conditions (28,400 U/ml) was in good agreement with the RSM predicted value (26,600) under the same conditions. The relative error was 0.068, which is acceptable and proves the accuracy and predictability of the considered model. Furthermore, as shown in the table and the contour plots of another maximum activity can occur at high temperatures. The second optimal operating variables were 55°C, pH 10.0 and 43.46 h, predicting a protease activity of 26,109. The accuracy evaluation test was performed at these optimum, and the results showed a good agreement with the predicted value.

Table 4. RSM considered optimal conditions and comparison of predicted protease activity with validation test result

Temperature (°C)	pH	Time (h)	Predicted Protease activity	Experimental protease activity	Relative error
25	10	43.98	26600	28400	0.068
55	10	43.46	26109	25800	0.012

Zymogram analysis

The zymogram analysis of crude extract is shown in Figure 7. The existence of two clear bands in gel might be attributed to the presence of two kinds of proteases in crude extract. This result could be related to the observation of two optimal temperatures in Table 4. Based on the migration distance of

the clear hydrolytic zone of the proteolytic activity in the dark background and the pre-stained protein molecular weight marker, the molecular weight of the proteases was evaluated. The molecular weights of the proteases were determined to be between 66.2 and 36.5 kDa using Gel Doc XR molecular imager (Bio RAD. Co).

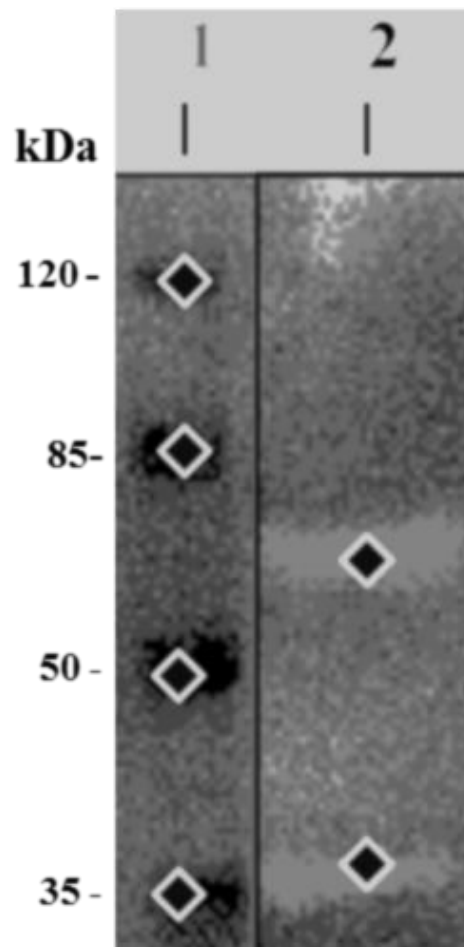


Figure 7. Casein zymogram profile of the crude supernatant. Two clear zones indicated that the proteases, which were produced in optimal conditions, were perfectly active in gel. Lane 1: molecular size marker; lane 2: crude supernatant

Compatibility with detergent

The results showed that the protease had a desirable stability in the presence of detergent. In detergent powder concentrations

of 5 and 10 g/L, the protease activities were perfect (in detergent free solution) at 92 and 86%, respectively.

Functional detergent test

As it depicted in Figure 8, in order to check the functionality of the crude enzyme, washing performance test was performed on the basis of cleaning blood stain ability. When the sole water was used, the blood mass was washed, but a light brown stain remained on the cloth. While enzyme free

detergent was utilized, a big part of the stain was washed. However, when detergent supplemented with crude enzyme was used, the stain was removed completely, which implies a significant improvement in the efficiency of cleaning blood stain test (Fig. 8D). This functional test indicates that the crude enzyme would be a good candidate for detergent application.

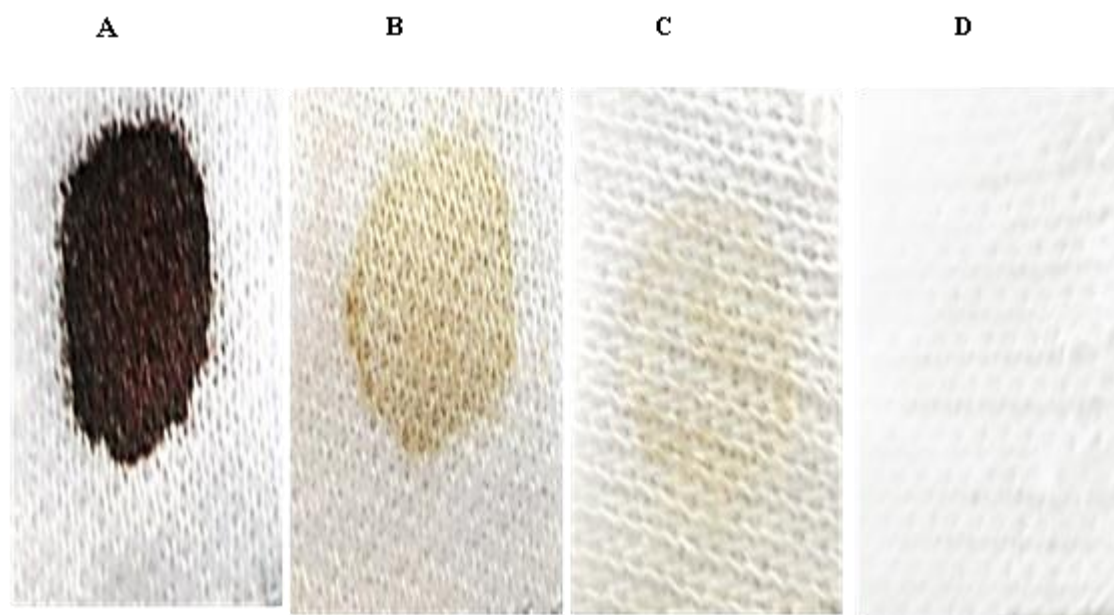


Figure 8. Washing performance test.(A) Unwashed blood stained cloth, (B) blood stained cloth immersed in water, (C) blood stained cloth in 5 g/L enzyme free detergent solution, (D) blood stained cloth in detergent solution containing crude enzyme

Discussion

In general, enzyme production in microorganisms is maximized at their own special conditions. Researchers have attempted to induce protease production using complex inexpensive carbon and nitrogen sources as compared to simple ones (1, 17, 22). Since wheat bran is an abundant and cheap material, its utilization as substrate leads to reduction in the cost of media for large-scale production.

There is a growing tendency for using

statistical experimental designs in biotechnology processes. As indicated, several studies have been carried out on the optimization of microbial protease production using statistical approaches. Absolutely, these approaches resulted in the quick, cheap and exact determination of optimal conditions. In this study, response surface methodology was applied for the optimization of protease production in order to investigate the interaction effects of independent variables including temperature, pH and incubation time. Among these, pH was proposed to be the most important factor influencing the

response, while time and temperature showed low effects on protease production. The best optimized answers were 25°C, pH 10.0, and approximately 44 h of incubation time and also, 55°C, pH 10.0, and approximate 44 h for obtaining protease activities of 26,600 and 26,109, respectively. In order to investigate the accuracy of the proposed model and optimization, a validation test was performed under optimized conditions. The results indicated that the protease activity predicted by the model under optimal conditions was in a good agreement with the experimental data and thus confirmed the model's validity. As shown in previous studies, the activities of proteases at low-temperatures are more preferable for some industries like detergent production (23), while the activities of proteases at high temperatures are more desirable for some other applications such as leather processing (1, 6, 24). Considering these facts, the obtained crude supernatant can be used for both industries. In addition, zymogram test showed two distinct hydrolytic zones corresponding to the crude enzyme and proved protease production under the optimal operating condition. This result is in correlation with previous studies such as Fakhfakh-Zouari et al. (2010) in

which five proteolytic enzymes of *Bacillus pumilus* A1 (16) were reported, as well as several other studies that reported the proteolytic enzymes of *B. pumilus* strains (25-27). Also, in this study, it was shown that the residual activities in the presence of 5 and 10 g/l concentrations of detergent powders were 92-87% in detergent free solution (100%), respectively. In comparison with other studies, the compatibility of the proteases in the presence of detergent powder is remarkable, for example Arulmani et al. (2007) reported a protease from *B.laterosporus*-AK1 with maximum of 75% residual activity in 8 g/L concentration of commercial detergent powders. Anwar and Mohammed (2000) isolated a protease from *Spilosoma oblique* with maximum of 70% residual activity in the presence of commercial detergents. Finally, washing performance test suggested that the crude enzyme could be an appropriate choice as a detergent additive in detergent industries.

Acknowledgement

This work was financially supported by the research council of the Isfahan University of Medical Sciences, project number 188047, Isfahan, Iran.

REFERENCES

1. Gupta, R., Beg, Q.K. and Lorenz, P. (2002). Bacterial alkaline proteases: molecular approaches and industrial applications. *Appl. Microbiol. Biot.*, 59, 15-32.
2. Masui, A., Yasuda, M., Fujiwara, N. and Ishikawa, H. (2008). Enzymatic hydrolysis of gelatin layers on used lith film using thermostable alkaline protease for recovery of silver and PET film. *Biotechnol. Progr*, 20, 1267-1269.
3. Demain, A.L. and Adrio, J.L. (2008). In *Natural Compounds as Drugs Volume I*, Springer, in press., pp. 251-289.
4. Rao, M.B., Tanksale, A.M., Ghatge, M.S. and Deshpande, V.V. (1998). Molecular and biotechnological aspects of microbial proteases. *Microbiol. Mol. Biol. R.*, 62, 597-635.
5. Joo, H.S., Kumar, C.G., Park, G.C., Kim, K.T., Paik, S.R. and Chang, C.S. (2002). Optimization of the production of an extracellular alkaline protease from *Bacillus horikoshii*. *Process. Biochem*, 38, 155-159.
6. Kumar, C.G. and Takagi, H. (1999). Microbial alkaline proteases: from a bioindustrial viewpoint. *Biotechnol. Adv*, 17, 561-594.
7. Wang, Q., Hou, Y., Xu, Z., Miao, J. and Li, G. (2008). Optimization of cold-active protease production by the psychrophilic bacterium *Colwellia* sp. NJ341 with response surface methodology. *Bioresource. Technol*, 99, 1926-1931.
8. Armstrong, N.A. (2006). *Pharmaceutical experimental design and interpretation*. CRC Press, London.
9. Singh, S.K., Singh, S.K., Tripathi, V.R., Khare, S.K. and Garg, S.K. (2011). Comparative one-factor-at-a-time, response surface (statistical) and bench-scale bioreactor level optimization of thermoalkaline protease production from a psychrotrophic *Pseudomonas putida* SKG-1 isolate. *Microb. Cell. Fact*, 10, 114.
10. Liu, S., Fang, Y., Lv, M., Wang, S. and Chen, L. (2010). Optimization of the production of organic solvent-stable protease by *Bacillus sphaericus* DS11 with response surface methodology. *Bioresource. Technol*, 101, 7924-7929.
11. Oskouie, S.F.G., Tabandeh, F., Yakhchali, B. and Eftekhari, F. (2008). Response surface optimization of medium composition for alkaline protease production by *Bacillus clausii*. *Biochem. Eng. J*, 39, 37-42.
12. Pillai, P., Mandge, S. and Archana, G. (2011). Statistical optimization of production and tannery applications of a keratinolytic serine protease from *Bacillus subtilis* P13. *Process. Biochem*, 46, 1110-1117.
13. Rao, Y.K., Lu, S.-C., Liu, B.-L. and Tzeng, Y.-M. (2006). Enhanced production of an extracellular protease from *Beauveria bassiana* by optimization of cultivation processes. *Biochem. Eng. J.*, 28, 57-66.
14. Reddy, L., Wee, Y.-J., Yun, J.-S. and Ryu, H.-W. (2008). Optimization of alkaline protease production by batch culture of *Bacillus* sp. RKY3 through Plackett–Burman and response surface methodological approaches. *Bioresource. Technol*, 99, 2242-2249.

15. Thys, R., Guzzon, S.O., Cladera-Olivera, F. and Brandelli, A. (2006). Optimization of protease production by *Microbacterium* sp. in feather meal using response surface methodology. *Process. Biochem*, 41, 67-73.
16. Fakhfakh-Zouari, N., Haddar, A., Hmidet, N., Frikha, F. and Nasri, M. (2010). Application of statistical experimental design for optimization of keratinases production by *Bacillus pumilus* A1 grown on chicken feather and some biochemical properties. *Process. Biochem*, 45, 617-626.
17. Haddar, A., Fakhfakh-Zouari, N., Hmidet, N., Frikha, F., Nasri, M. and Kamoun, A.S. (2010). Low-cost fermentation medium for alkaline protease production by *Bacillus mojaviensis* A21 using hulled grain of wheat and sardinella peptone. *J. Biosci. Bioeng.*, 110, 288-294.
18. Rabbani, M., Bagherinejad, M.R., Sadeghi, H.M., Shariat, Z.S., Etemadifar, Z., Moazen, F., Rahbari, M., Mafakher, L. and Zaghian, S. (2013). Isolation and characterization of novel thermophilic lipase-secreting bacteria. *Braz. J. Microbiol.*, 44, 1113-1119.
19. Mukherjee, A. K and K., R.S. (2011). A statistical approach for the enhanced production of alkaline protease showing fibrinolytic activity from a newly isolated Gram-negative *Bacillus* sp. strain AS-S20-I. *New. Biotechnol*, 28, 182-189.
20. Garciacarreno, F., Dimes, L. and Haard, N. (1993). Substrate-gel electrophoresis for composition and molecular weight of proteinases or proteinaceous proteinase inhibitors. *Anal. Biochem*, 214, 65-69.
21. Arulmani, M., Aparanjini, K., Vasanthi, K., Arumugam, P., Arivuchelvi, M. and Kalaichelvan, P.T. (2007). Purification and partial characterization of serine protease from thermostable alkalophilic *Bacillus laterosporus*-AK1. *World. J. Microb. Biot.*, 23, 475-481.
22. Hübner, U., Bock, U. and Schügerl, K. (1993). Production of alkaline serine protease subtilisin Carlsberg by *Bacillus licheniformis* on complex medium in a stirred tank reactor. *Appl. Microbiol. Biotechnol.*, 40, 182-188.
23. Maurer, K.-H. (2004). Detergent proteases. *Curr. Opin. Biotech.*, 15, 330-334.
24. Rai, S.K. and Mukherjee, A.K. (2011). Optimization of production of an oxidant and detergent-stable alkaline β -keratinase from *Brevibacillus* sp. strain AS-S10-II: Application of enzyme in laundry detergent formulations and in leather industry. *Biochem. Eng. J.*, 54, 47-56.
25. Kumar, C. (2002). Purification and characterization of a thermostable alkaline protease from alkalophilic *Bacillus pumilus*. *Lett. Appl. Microbiol.*, 34, 13-17.
26. Huang, Q., Peng, Y., Li, X., Wang, H. and Zhang, Y. (2003). Purification and characterization of an extracellular alkaline serine protease with dehairing function from *Bacillus pumilus*. *Curr. Microbiol*, 46, 0169-0173.
27. Miyaji, T., Otta, Y., Nakagawa, T., Watanabe, T., Niimura, Y. and Tomizuka, N. (2006). Purification and molecular characterization of subtilisin-like alkaline protease BPP-A from *Bacillus pumilus* strain MS-1. *Lett. Appl. Microbiol*, 42, 242-247.