

---

i

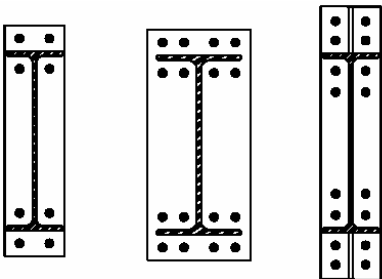
\*

-  
-  
( / / / / / / / / )

Ansys

:

( )



T

[ ]

---

[ ]

[ ]

[ ]

Ansys

[ ]

Ansys

[ ]

[ ]

[ ]

[ ] SAC

(IPE 600 ) W24x68

(IPBL 360 ) W14x120

( )

) "

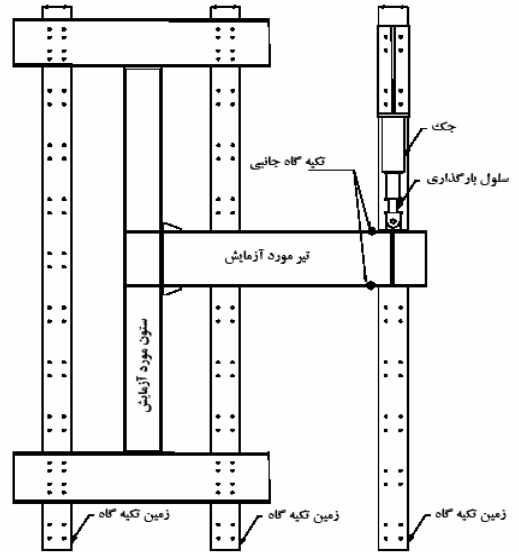
( . ) / " ( .

( . ) / "

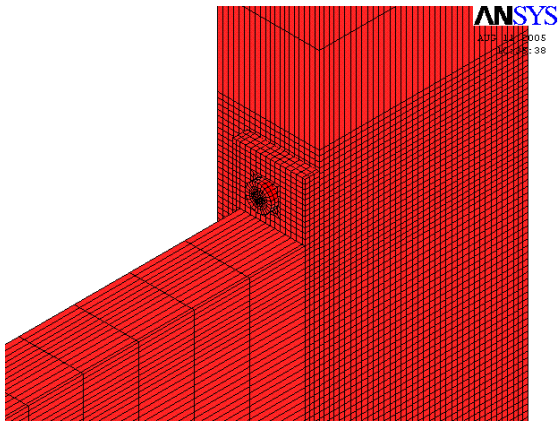
..

---

Contact174  
Solid45



[ 1 ]



Solid45

( . / ) / "

Target170    Contact174  
( )

( . ) " ( . / ) / "

( . / ) / "

/ ) " ( . / ) / "

( . / ) " ( .

%

[ ]

( )

/ ( Mpa) Ksi

[ ] SAC

( ) ( )

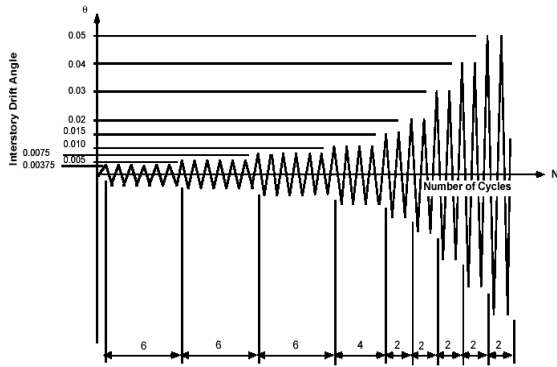
)

(.

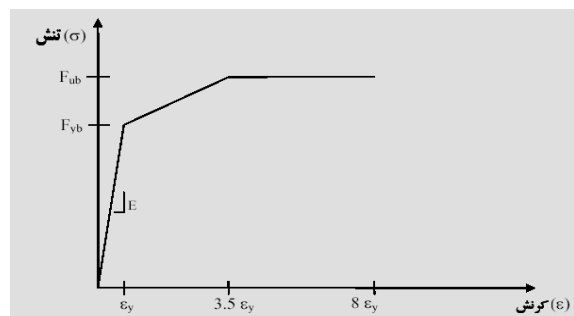
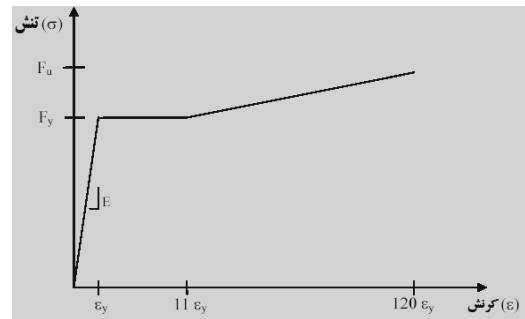
[ ]

:

Ksi (Mpa)	Ksi (Mpa)		
/ ( )	( )	A572	
( )	( )	A36	
( )	( )	A490	



[ ] SAC

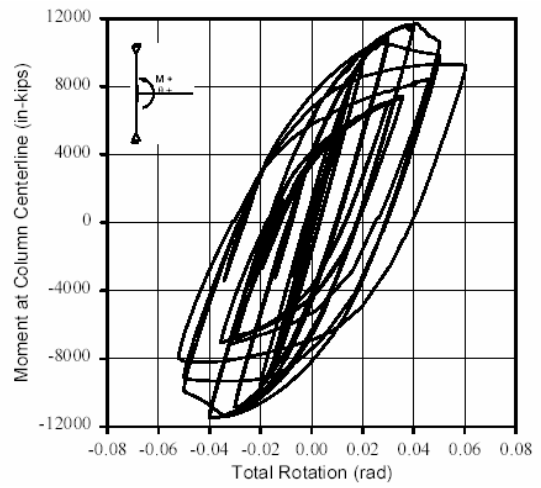


( )

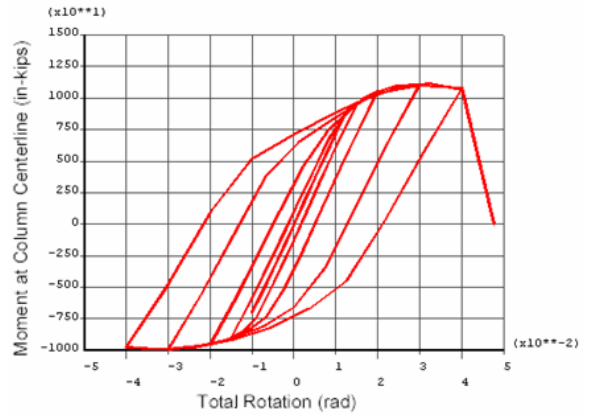
( )

( . ) "

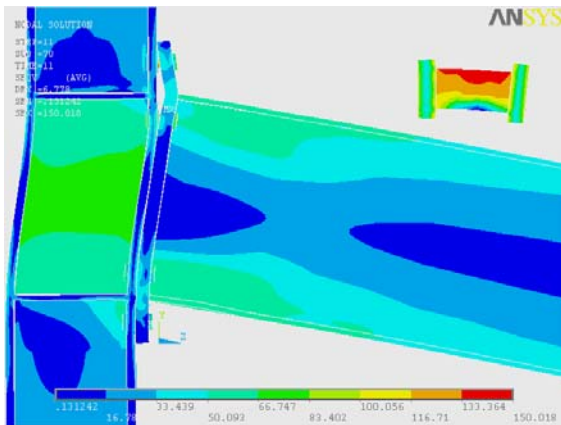
( )



[ ]



$$M_{\max} \quad \theta_u \quad M_y \quad \theta_y \quad ( )$$



[ ]

$M_{\max}$ (k.in)	$\theta_u$ (rad.)	$M_y$ (k.in)	$\theta_y$ (rad.)	
	/		/	
	/		/	

( )

( . ) / "

[ ] AISC

[ ] AISC

[ ]

$$V_p < V_y$$

$$V_p$$

$$V_y$$

( )

$$V_y = 0.6F_{yc}d_c t_{wc} \left\{ 1 + \frac{3b_c t_{cf}^2}{d_b d_c t_{wc}} \right\}$$

( )

$$V_p = 0.8 \frac{M_p}{d_b}$$

( )

$d_b$

$M_p$

$t_{cf}, b_c, t_{wc}, d_c, F_{yc}$

[ ]

$M_p$

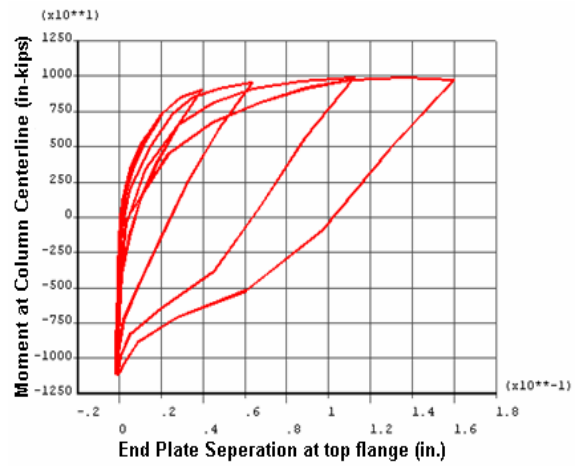
$$M_p = f_y \cdot Z$$

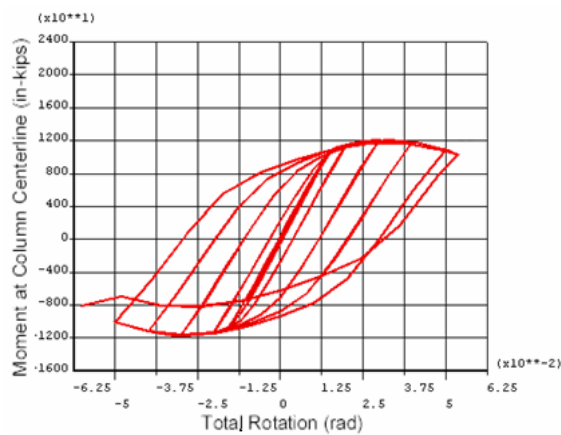
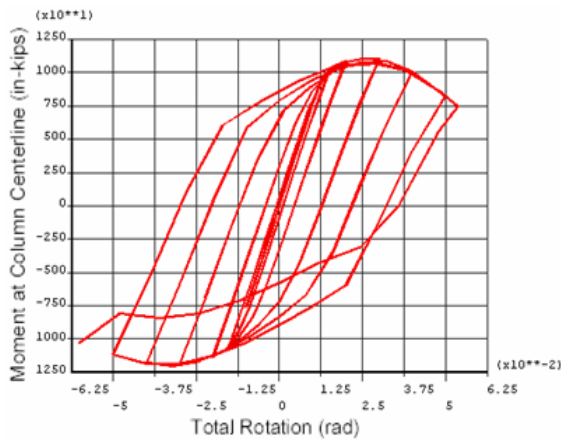
( )

) "  $f_y$

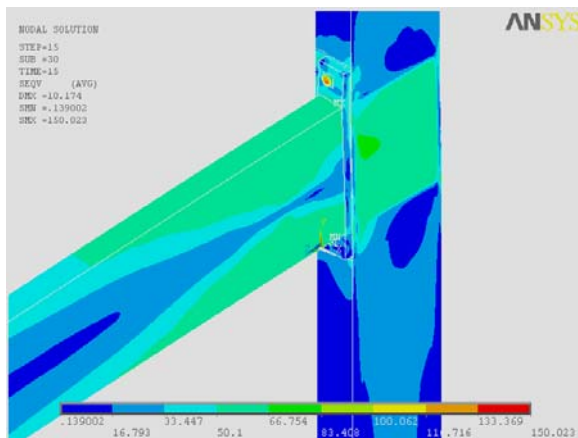
(

[ ]





$M_{max}$ (k.in)	$\theta_p$ (rad.)	$M_y$ (k.in)	$\theta_y$ (rad.)	
	/		/	"
	/		/	"



[ ] FEMA-350

$$M_p = 1.1 \left[ \frac{f_y + f_u}{2} \right] Z \quad (1)$$

$$V_y = 0.6 \times 53 \times 14.5 \times 0.6 \times \left[ 1 + \frac{3 \times 14.75 \times 0.95^2}{24 \times 14.5 \times 0.6} \right] = 30211 K \quad (2)$$

:( Kip = / kN)

$$V_{p1} = 0.8 \frac{53 \times 178}{24} = 314.7 \text{ Kips} \quad (3)$$

$$V_{p2} = 0.8 \frac{1.1 \left( \frac{53 + 70.7}{2} \right) \times 178}{24} = 403.7 \text{ Kips} \quad (4)$$

$$V_{p1} = 314.7 K \Rightarrow d_{c1} = 15.3'' \Rightarrow d_c = 16'' \quad (5)$$

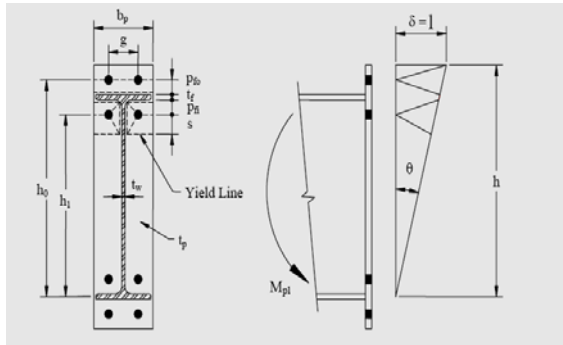
$$V_{p2} = 403.7 K \Rightarrow d_{c2} = 20.3'' \Rightarrow d_c = 21'' \quad (6)$$

( ) ( )

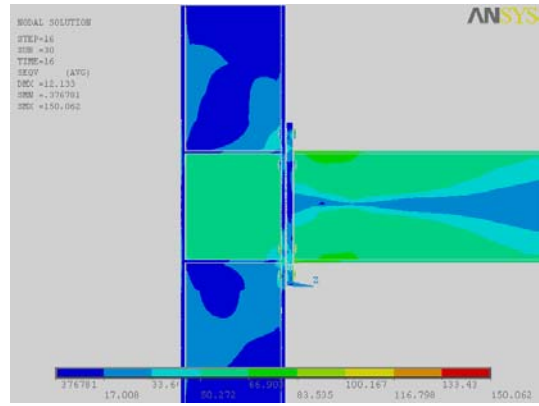
( )

$$S = \frac{1}{2} \sqrt{b_p g}$$

( )



[ ]



( )

$$s = \frac{1}{2} \sqrt{10 \times 6} = 3.87''$$

( )

$$M_{nL} = 38 \times 1.5^2 \left[ \frac{10}{2} \left[ 215 \left( \frac{1}{19} + \frac{1}{387} \right) + 259 \left( \frac{1}{19} \right) - \frac{1}{2} \right] + \frac{2}{6} [215(19+387)] \right]$$

$$= 16362 \text{ (K}\cdot\text{in)}$$

( )

k.in  $\phi_b = 0.9$

( )

( )

$M_{nL}$

( ) ( )

$$53 \times 178 = 0.9 \times 38 \times t_p^2 \times 191.368 \Rightarrow t_{p1} = 1.43''$$

( )

$$1.1 \left( \frac{53 + 70.7}{2} \right) 178 = 0.9 \times 38 \times t_p^2 \times 191.368$$

$$\Rightarrow t_{p2} = 1.21''$$

( )

$$M_l = F_{yL} t_p^2 \left\{ \frac{b_p}{2} \left[ h_1 \left( \frac{1}{p_{fi}} + \frac{1}{s} \right) + h_0 \left( \frac{1}{p_{fo}} \right) - \frac{1}{2} \right] + \frac{2}{g} [h_1(p_{fi} + s)] \right\}$$

( )

$$g \quad s \quad b_p \quad p_{fo} \quad p_{fi} \quad h_0 \quad h_1$$

$$t_p \quad \cdot \quad ( )$$

$F_{yL}$

s

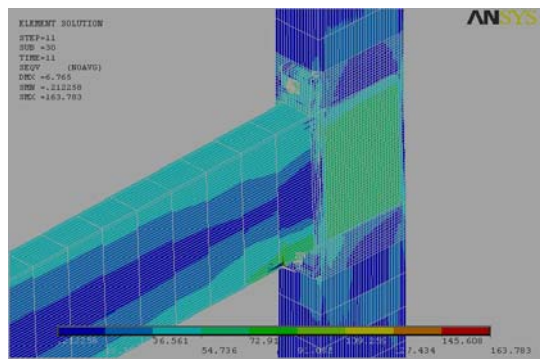
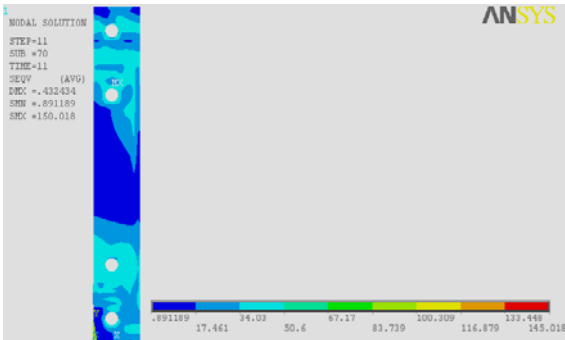
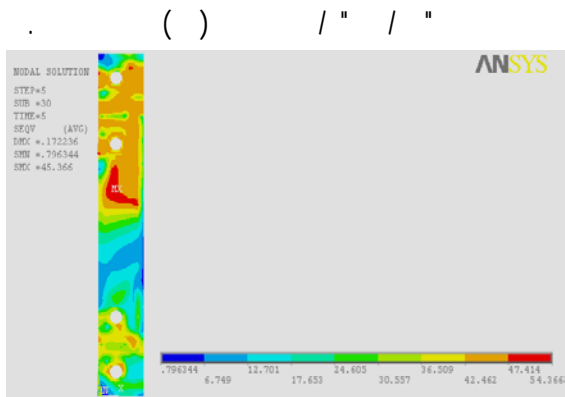
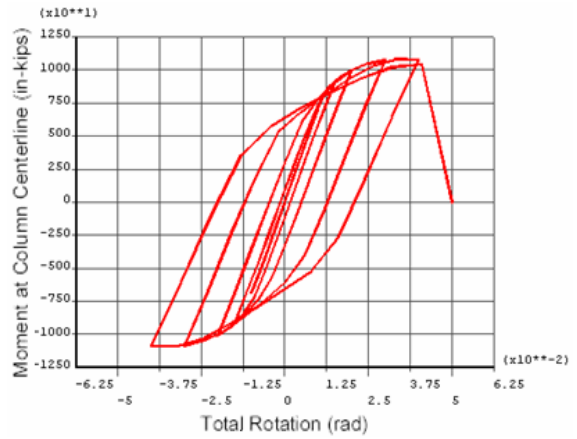
/ "

/ "



$$M_{nL} = 1.25^2 \times 38 \times 191.3 = 11358.3 \text{ K.in} \quad ( )$$

$$( ) \quad ( ) \quad ( )$$



$$( ) \quad ( )$$

$$) \quad / "$$

$$($$

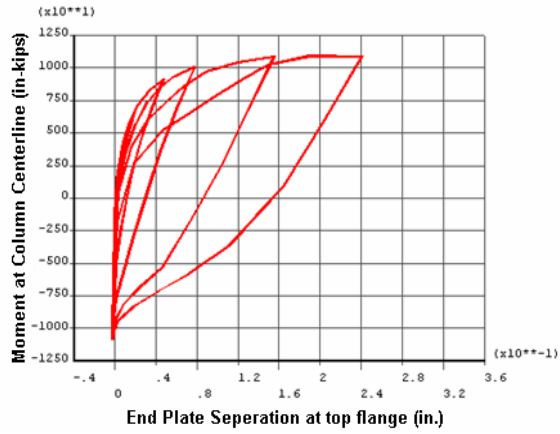
$$/ "$$

$$( \quad ) "$$

K.in

ksi

( Mpa)



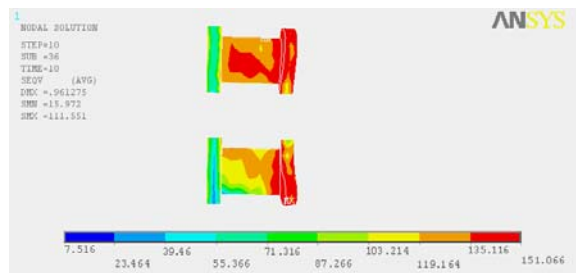
/ "

( Mpa) ksi

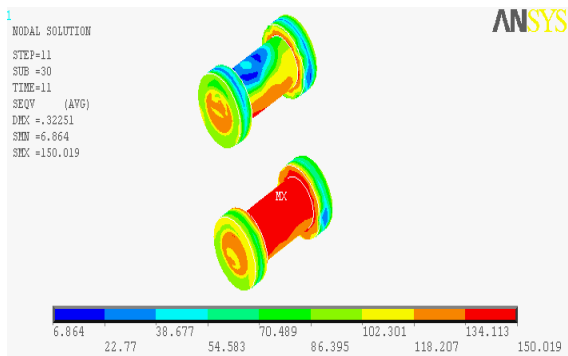
( )

/ "

/ "



( ) ( )

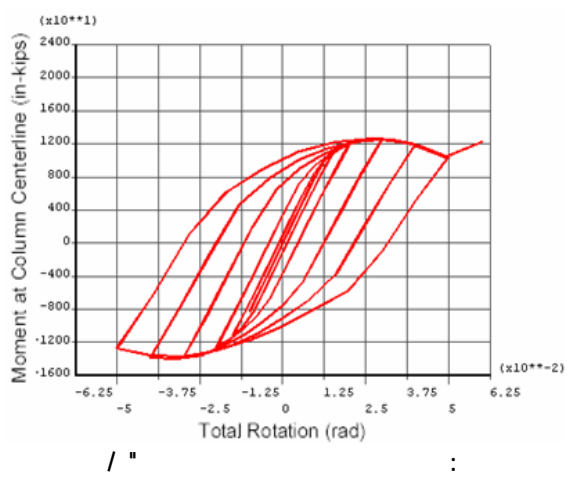


( . ) / "

( . ) / "

/

( ) [ ]  
 K.in ( )  
 / ( )



/ " :

( ) (h<sub>st</sub>)  
 (L<sub>st</sub>)  
 ( )

$$\frac{d}{4}$$

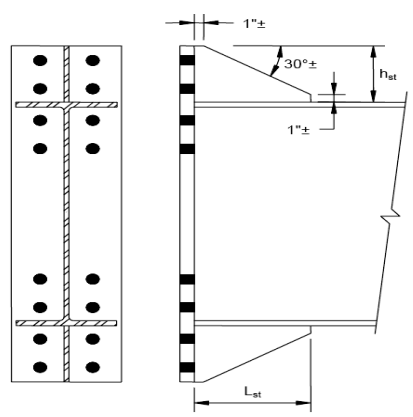
FEMA

$$L_{st} = \frac{h_{st}}{\tan 30^\circ} = \frac{4.5}{\tan(30)} = 8"$$

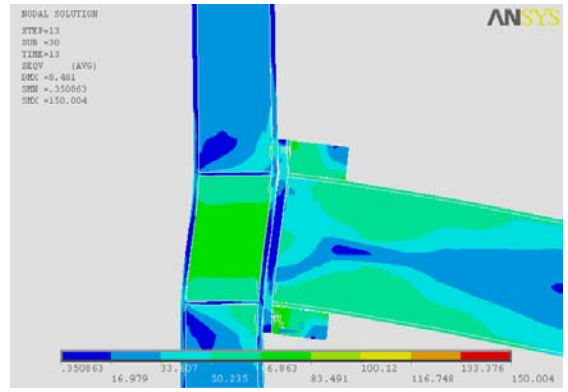
( )

( )

( )



:



$l$  "

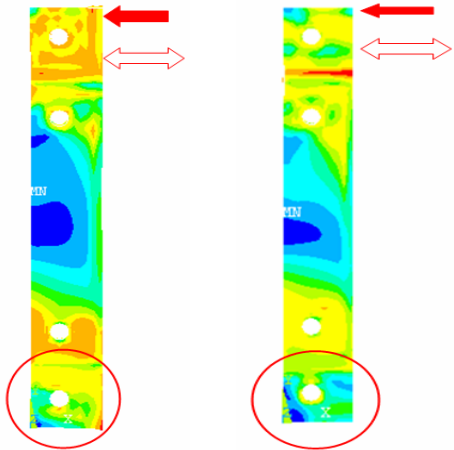
( )

( ) ( )

$\theta = l$

( .  $l$  )  $l$  "

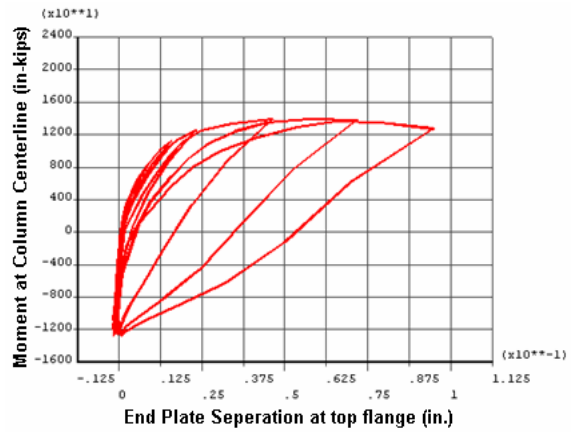
( . )  $l$  "



$l$  "

( )

( )



$l$  "

( )

( )

- 
- 1 - Krishnamurthy, N. (1979). "Closure to A fresh look at bolted end-plate behavior and design." *Engineering Journal*, Vol. 16, No.2, PP.54-64.
  - 2 – Ghassemieh, M., Kukreti, A. R. and Murray, T. M. (1983). "Inelastic finite element analysis of stiffened end-plate moment connections." *Research Report No. FSEL/AISC 83-02*, Fears Structural Engineering Laboratory, School of Civil Engineering and Environmental Science, University of Oklahoma, Norman, Oklahoma, USA.
  - 3 - Tsai, K. C. and Popov, E. P. (1990). "Cyclic behavior of end-plate moment connections." *Structural Engineering*, Vol.116, No.11, PP.2917-2930.
  - 4 - Bahaari, M. R. and Sherbourne, A. N. (1994). "Computer modeling of an extended end-plate bolted connection." *Computers and Structures*, Vol.52, No.5, PP.879-893.
  - 5 - Adey, B. T., Grondin, G. Y. and Cheng, J. J. R. (2000). "Cyclic loading of end-plate moment connections." *Canadian Journal of Civil Engineering*, Vol. 27, No. 4, PP.683-701.
  - 6 - Sumner, E. (2003). "Unified design of extended end-plate moment connections subject to cyclic Loading." *Dissertation submitted to the faculty of Virginia polytechnic Institute and state University*, Blacksburg, Virginia, USA.
  - 7 - SAC Joint Venture. (1997). "Protocol for fabrication, inspection, testing and documentation of beam-column connection tests and other experimental specimens." *Rep. No. SAC/BD-97/02*, Sacramento, California, USA.
  - 8 - Seismic Provisions for Structural Steel Buildings, (1997). American Institute of Steel Construction, Chicago, Illinois, USA.
-

- 
- 9 - Ryan, J. C. (1999). "Evaluation of Extended End-Plate Moment Connections Under Seismic Loading." *Master Thesis submitted to the faculty of Virginia Polytechnic Institute and State University, Blacksburg, Virginia, USA.*
- 10 - Jalalpoor, M. (2006). *Evaluation of Moment resisting extended end-plate connections subjected to cyclic loading.* Thesis submitted to the faculty of engineering, Tehran University, Tehran, Iran.
- 11 - FEMA (2000). FEMA-350, Recommended Seismic Design Criteria for New Steel Moment Frame Buildings, Federal Emergency Management Agency, Washington D.C., U.S.A.
- 12 - Srouji, R., Kukerti, A. R. and Murray, T. M. (1983). "Yield line analysis of end-plate connections with bolt force predictions." *Research Report No. FSEL/MBMA 83-05*, Fears Structural Engineering Laboratory, School of Civil Engineering and Environmental Science, University of Oklahoma, Norman, Oklahoma, USA.

- 
- i- Extended end-plate moment connection
  - 2 - Cyclic loading
  - 3 - Actuator
  - 4 - Pre-tension
  - 5 - Panel zone
  - 6 - Prying action
-